

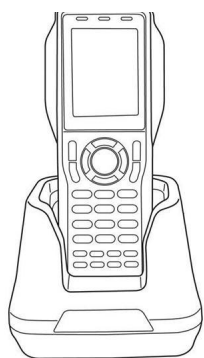
PT-60 Mobile Computer

Quick Start Guide

ARGOX
Empower the Barcode

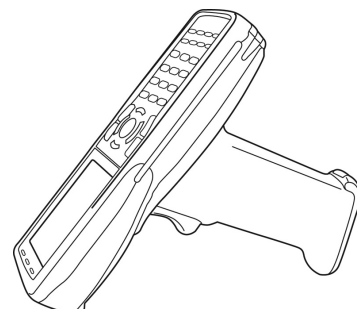
<http://www.argox.com>

See User Manual for more information



1. **Charging the Main Batteries at least 16 hours for the first time**
2. **Please cold rest** (press reset and power button simultaneously) **and make sure system reboot then start to charge.**

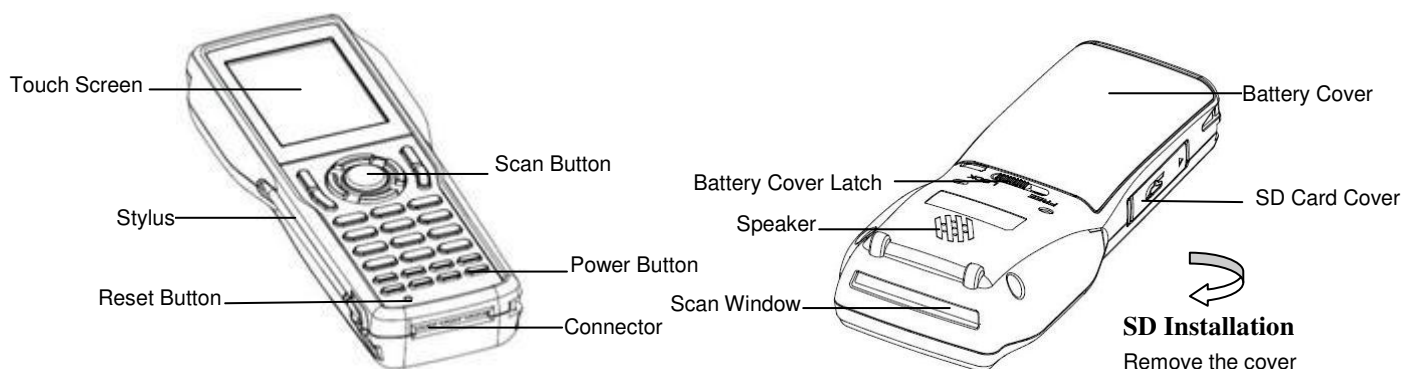
- It may take up to 2 hours to fully charge the empty backup battery. **The first time charge should be for at least 16 hours to insure a proper charge**
- After you have initially charged your device for about 8 hours, the device is ready to be used. You can now start up your device where you'll calibrate the display, learn some basic stylus usage, and set up the system time zone, date and time.



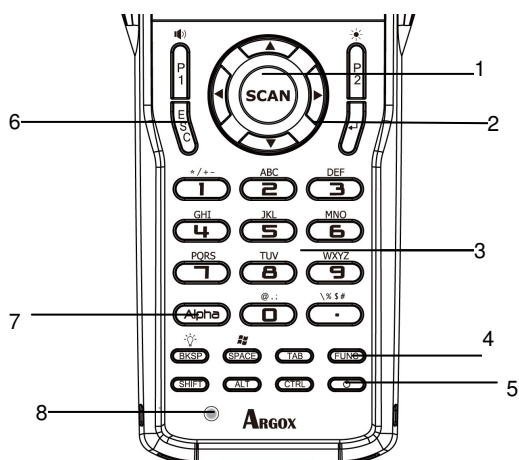
Feature

Front View

Back View



Keypads and Function Buttons



When the Function button is pressed, an icon appears in the operation system

Function activated icon



1. Scan key
2. Cursor key
3. 10-key pad
4. Function key

5. Power key
6. ESC key
7. Alpha key
8. Reset

Function key

Use this key to launch applications and select items (show on the keypad in yellow).

- Press the "FUNC" key once to activate this mode followed by another key

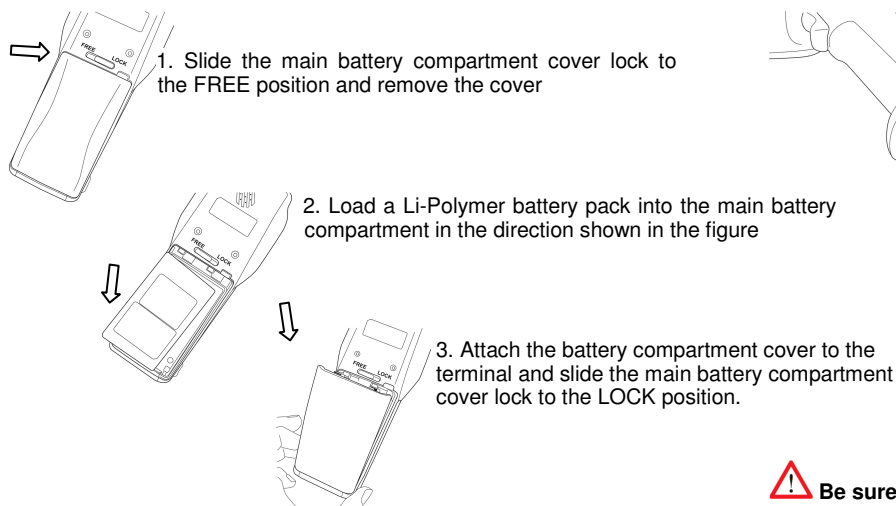
Alpha key

Use this key to access the secondary layer of characters and actions.

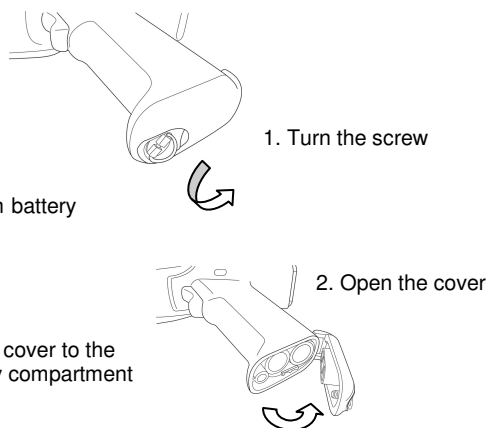
- Press the "Alpha" key once to lock the keypad in the Alpha state
- Press the "Alpha" key second time to return to the normal state

1. Installing the Battery

Install or replace the main battery in the terminal



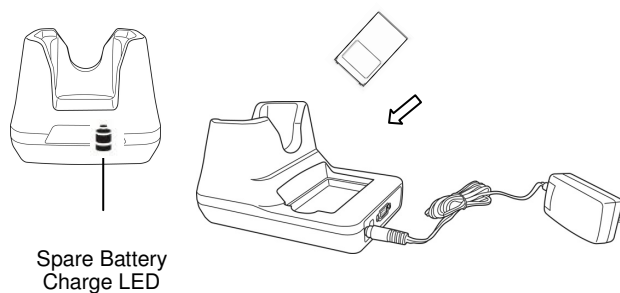
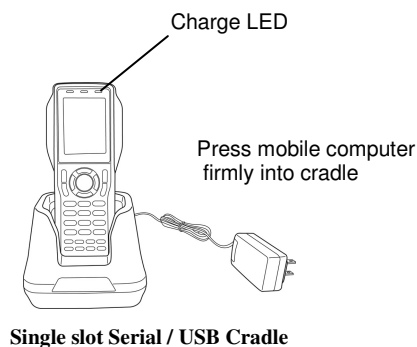
Install or replace the main battery in the gun grip



Be sure to turn the terminal off before you do this

2. Charging the Battery

Red = Normal charge / Green = Full Charge

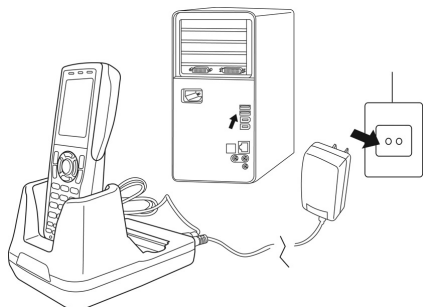


3. Install ActiveSync

Download ActiveSync ® 4.5 or higher from <http://www.microsoft.com> and follow the instructions to install ActiveSync onto the host computer.

4. Communication with Host

The PT-60 mobile computer let you link to a host computer through the CRD-20 cradle for data communication.



5. Create a Partnership

Follow the on screen ActiveSync instructions to establish a connection between the PT-60 and the host computer.

Support Information

More Information on the PT-60

Visit the Argox Web site [http:// www.argo.com](http://www.argo.com)

Setting up, Using and troubleshooting the PT-60
PT-60 User's Manual

Available at [http:// www.argo.com](http://www.argo.com)



49-P60001-001

49-P60001-001 Rev. A – November 2008