
M1255

12" Atom™ Portable Medical PC

User's Manual

Version 1.0

This page is intentionally left blank.

Contents

Copyright Notice	i
About This User's Manual	i
Warranty	ii
Instructions for Rechargeable Battery Pack	iii
Chapter 1 - General Information.....	1
1.1 Packing List.....	2
1.2 Ordering Information	2
1.3 Specifications.....	3
1.4 Overview	5
1.5 Dimensions.....	6
1.6 Location of Buttons and Indicators	7
1.7 Bar Code Types	12
Chapter 2 - Using the Medical PC	13
2.1 Getting Started	14
2.2 Docking & Undocking.....	15
2.3 Driver Installation.....	17
2.3.1 Touch Screen Driver Installation	17
2.3.2 Chipset Driver Installation	20
2.3.3 Graphics Driver Installation	23
2.3.4 Audio Driver Installation	26
2.3.5 LAN Driver Installation	28
2.3.6 Wireless LAN Driver Installation	30
2.3.7 Bluetooth Driver Installation.....	33
2.3.8 RFID Driver Installation	37
2.3.9 ComPort Driver Installation	40
2.3.10 Fingerprint Scanner Driver Installation	41
2.3.11 Fingerprint Scanner Application Installation ..	43
2.3.12 FunctionKey Interface Installation	46
2.4 Audio Recording	47
2.5 Screen Security Lock	47
2.6 On-screen Keyboard.....	47
2.7 SAS.....	48

2.8 Video Recording	52
2.9 Camera	53
2.10 Bluetooth	54
2.11 Bar Code Scanner	54
2.12 RFID Reader	55
2.13 Function Key Tray	56
2.13.1 Function Key Configuration	56
2.13.2 Lock Interval	57
Chapter 3 - BIOS	59
3.1 BIOS Main Setup	60
3.2 Advanced Settings	61
3.2.1 IDE Configuration	62
3.2.2 Install OS Configuration	64
3.2.3 External USB Configuration	64
3.2.4 Cradle Configuration	64
3.3 Boot Settings	65
3.3.1 Boot Settings Configuration	66
3.3.2 Boot Device Priority	67
3.3.3 Hard Disk Drives	68
3.4 Security	69
3.5 Exit Options	71
Appendix	73
A.1 Docking Station	74
A.1.1 Connecting an External CRT	75
A.1.2 External Serial Port (COM)	75
A.1.3 LAN Port	75
A.1.4 USB Ports	76
A.1.5 DC Power Input	76
A.1.6 LED Indicator on Docking Station	76

Copyright Notice

All Rights Reserved.

The information in this document is subject to change without prior notice in order to improve the reliability, design and function. It does not represent a commitment on the part of the manufacturer.

Under no circumstances will the manufacturer be liable for any direct, indirect, special, incidental, or consequential damages arising from the use or inability to use the product or documentation, even if advised of the possibility of such damages.

This document contains proprietary information protected by copyright. All rights are reserved. No part of this manual may be reproduced by any mechanical, electronic, or other means in any form without prior written permission of the manufacturer.

About This User's Manual

This user's manual provides general information and installation instructions about the product. This User's Manual is intended for experienced users and integrators with hardware knowledge of personal computers. If you are not sure about any description in this Quick Installation, please consult your vendor before further handling.

Warranty

This product is warranted to be in good working order for a period of one year from the date of purchase. Should this product fail to be in good working order at any time during this period, we will, at our option, replace or repair it at no additional charge except as set forth in the following terms. This warranty does not apply to products damaged by misuse, modifications, accident or disaster.

Vendor assumes no liability for any damages, lost profits, lost savings or any other incidental or consequential damage resulting from the use, misuse of, or inability to use this product. Vendor will not be liable for any claim made by any other related party.

Vendors disclaim all other warranties, either expressed or implied, including but not limited to implied warranties of merchantability and fitness for a particular purpose, with respect to the hardware, the accompanying product's manual(s) and written materials, and any accompanying hardware. This limited warranty gives you specific legal rights.

Return authorization must be obtained from the vendor before returned merchandise will be accepted. Authorization can be obtained by calling or faxing the vendor and requesting a Return Merchandise Authorization (RMA) number. Returned goods should always be accompanied by a clear problem description.

Instructions for Rechargeable Battery Pack

How to recharge:

- To recharge Lithium-ion battery, install it into the computer and then connect the power adapter to the power input plug of the computer.
- The battery will be fully charged within 2-4 hours (depending on the capacity of the battery). When finished charging, the charge indicator will turn on steadily in green and then it's recommended to remove the adapter from the computer.
- It's recommended not to recharge intermittently, which means not plugging and unplugging the power adapter frequently in short period of time.
- It's recommended to turn off the computer before charging.
- Do not use the power adapter that is not made for your computer. Supplying the computer with inappropriate voltage may cause harm to the battery or, even worse, may burn the computer.

How to use:

- It's recommended to supply power via the adapter without the battery installed, while you are to use the computer for a long time. And reinstall the battery before you go out.
- The lithium-ion battery is currently one of the most popular battery packs right now. The biggest advantage is that it has no memory effect that users needn't worry about. Users can charge the battery anytime whether the battery is fully drained or not. However, it's recommended that users drain the battery until the system shows power shortage warning and then recharge the battery. Doing so is helpful to the reliability of using the battery.
- Don't use the battery pack as a power supply for other equipment.

How to store:

- Don't expose the battery to elevated heat situations such as under direct sunlight in a car or near fire.
- Don't disassemble the battery, or the battery leakage might cause skin or eye injury. If electrolyte leaking from the battery pack contacts your skin or clothing, immediately flush it with running water. If it splashes in eye, rinse the eye at least 15 minutes with clean water and then seek medical attention.
- To avoid battery leakage or explosion, don't discard the battery into water or fire, or near a heat source such as a gas stove or an oven.
- Use the appropriate container to store the battery such as a paper box. Do not allow a metal object to touch the terminals of the battery.

-
- When storing for a long period of time, keep the battery approximately at the charging state of 60 ~ 80% and regularly use it. The battery should be completely discharged and recharged once each month to condition the cells inside the battery to ensure the battery delivers the most available capacity.
 - The battery consists of precision electrical components and cells. Do not drop or hit the battery.

General Conditions of Storage

Temperature: 0°C ~ 60°C

Humidity: 65 ± 20RH

The table listed below describes how long the battery will be empty with the respective storage temperature conditions.

Storage Period	Storage Temperature
1 Month	-20°C ~ 60°C
3 Months	-20°C ~ 45°C
1 Year	-20°C ~ 20°C

Note

- When the operating temperature is above 60°C or below 0°C, battery charging stops.
- When the operating temperature exceeds 65°C, battery discharging stops.
- While the medical computer is docked into the docking station, the internal battery has the higher priority to be charged; the battery that installed in the external charging slot of the docking station is not charged until the internal battery is fully charged.



Chapter 1

General Information

1.1 Packing List

Panel PC	1 x M1255
Docking Station	1 x DKS-1255
Accessory	1 x Power Cord (French Cord set)
Package	1 x Power Cord (American Cord set)
	1 x User's Manual
	1 x Driver CD
	1 x Power Adapter
	1 x Screws Kit

Before up and running, please make sure the package contains all of above accessories.
 If any of the above items is damaged or missing, contact your vendor immediately.

1.2 Ordering Information

M1255/N270-C22	12" Intel Atom™ Portable Medical PC w/ Resistive Touchscreen
BAT-1255	M1255 External Battery 4S1P 14.8V/1880mA

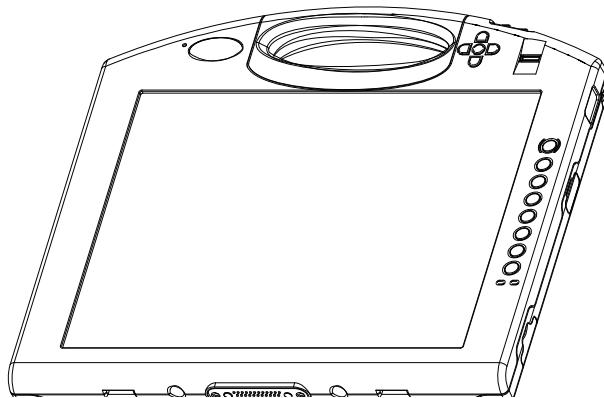
1.3 Specifications

Model Name	Medical Panel PC M1255	
System	CPU	Intel® Atom™ N270, 1.6GHz FSB 400/533MHz 512K Cache
	Graphics Controller	Intel 945GSE
	Memory	1 x 200-pin SO-DIMM DDR2 1GB Memory (module installed)
	Chipset	Intel 945GSE + Intel ICH7M
	Audio	Azalia HD ALC888 audio
	Storage	1 x 1.8" IDE HDD 60G installed
	Connectivity	1 x Realtek 8111C-VC-GR PCI-E GbE LAN 1 x 802.11 b/g/n Mini PCIe Wireless LAN Card 1 x Bluetooth Module
	Security	Biometric recognition by Fingerprint scanner
	Camera	Color, 2.0 Megapixel CMOS Camera
	RFID	13.56MHz RFID Reader with ISO 15693 Support
	I/O	1 x USB 2.0 Port
	Battery	Internal 1880mAh/11.1V 3-cell Li-battery External 1880mAh/14.8V 4-cell Li-battery
Buttons & LED	Function Key	1 x Barcode scan trigger button
		1 x RFID read trigger button
		1 x Wi-Fi button
		2 x Audio button
		2 x LCD backlight button
		1 x Audio Record button
		1 x Screen Security Lock button
		1 x On-screen keyboard button
		1 x SAS button (Ctrl + Alt + Del)
		1 x Video Record button
LED Indicator	4 LEDs on the front panel (Power & Blue-tooth are covered by the respective buttons)	
Power Button	1 x Power on/off button	
LCD Display	Size	12.1" TFT Active Matrix Panel
	Brightness	200 cd/m ² (typical)
	Max. Resolution	1024 x 768 (XGA) w/ 262144 colors
	Viewing Angle	+70° ~ -70° (H), +55° ~ -70° (V)
	Backlight Type	CCFL

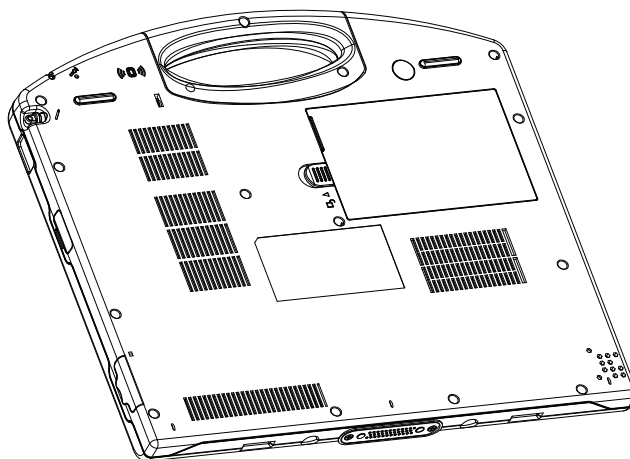
Touch Screen	Type	Analog Resistive
	Light Transmission	80%
	Controller Interface	USB Interface
Power Requirement	Power Input	DC 19V input by ext.65w power adapter
	Power Consumption	14w (AVG.)
Mechanical & Environmental	Dimensions (W x D x H)	307 x 25 x 275.9 mm (12.09" x 0.98" x 10.76")
	Operating Temp.	0 ~ 40°C (32 ~ 104°F)
	Storage Temp.	-20 ~ 60°C (-4 ~ 140°F)
	Operating Humidity	8 ~ 80% (non-condensing)
	Storage Humidity	8 ~ 90% (non-condensing)
	EMI/EMC	CE/FCC Class B, CCC, EN60601-1-1, EN60601-1-2 compliant
	IP Rating	Front panel IP54 compliant
	Vibration	5 ~ 500Hz (3 axes: X, Y, Z), 1G PTP
	Shock	10G peak (11m Sec.)
	Transit Drop	Under 2.5ft (76cm)
	Weight (Net)	1.8kg (3.97lb) with internal + external battery

1.4 Overview

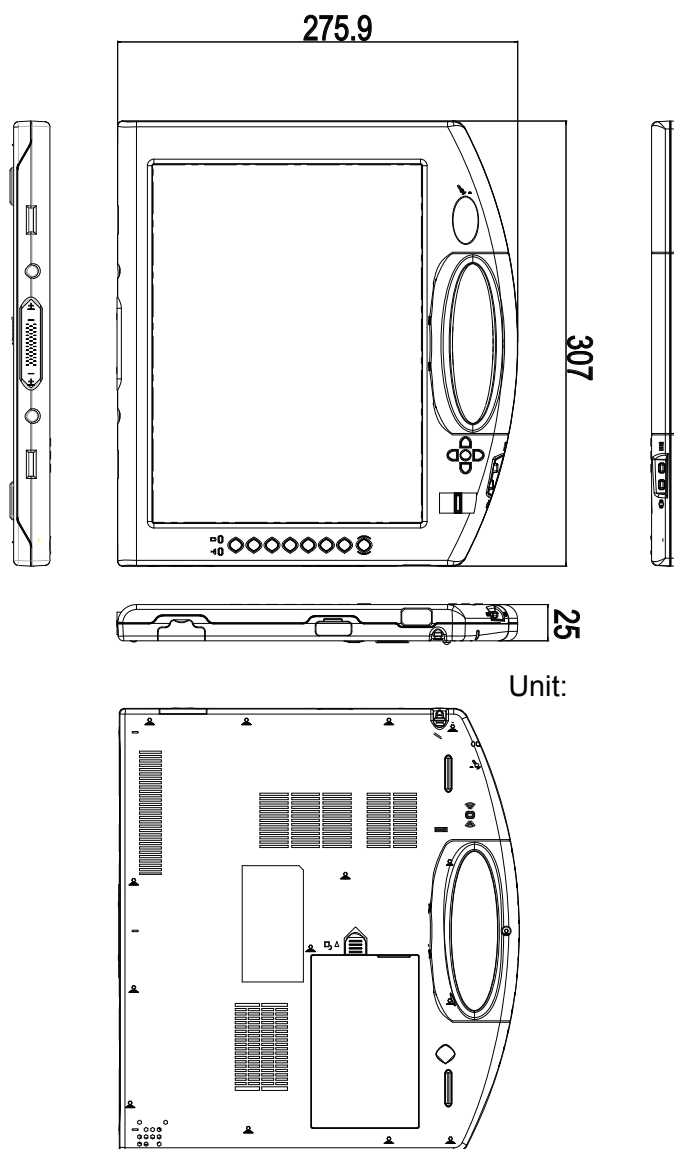
Front view



Rear view



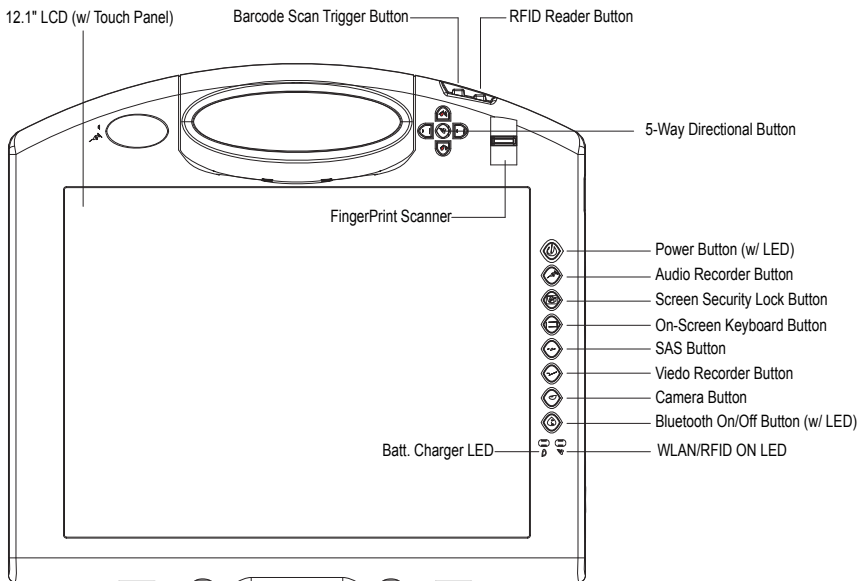
1.5 Dimensions
















1.6 Location of Buttons and Indicators

The front panel contains power button, fingerprint scanner, function control buttons, LED indicators etc.

Front side




Control Buttons

Button	Description
	Bar Code Scanner Press to trigger the bar code scanner.
	RFID Reader Press to enable/disable the RFID reader.
	Speaker volume Press the upper/lower button to increase/decrease the speaker volume.
	WLAN Press to enable/disable the Wi-Fi connection.
	LCD backlight Press the left/right button to decrease/increase LCD backlight.
	Power Press to turn the power on/off or to wake the system up from hibernation mode.
	Audio Record Press to bring up the recorder application.
	Screen Security Lock Press to lock/unlock the touchscreen.
	On-screen Keyboard Press to bring up or close the on-screen keyboard.
	SAS Press to lock/log on to the system (Ctrl+Alt+Del).
	Video Record Press to start video recording. Press again to stop recording.
	Camera Press to take pictures.
	Bluetooth Press to enable/disable Bluetooth connectivity.

LED Indicators

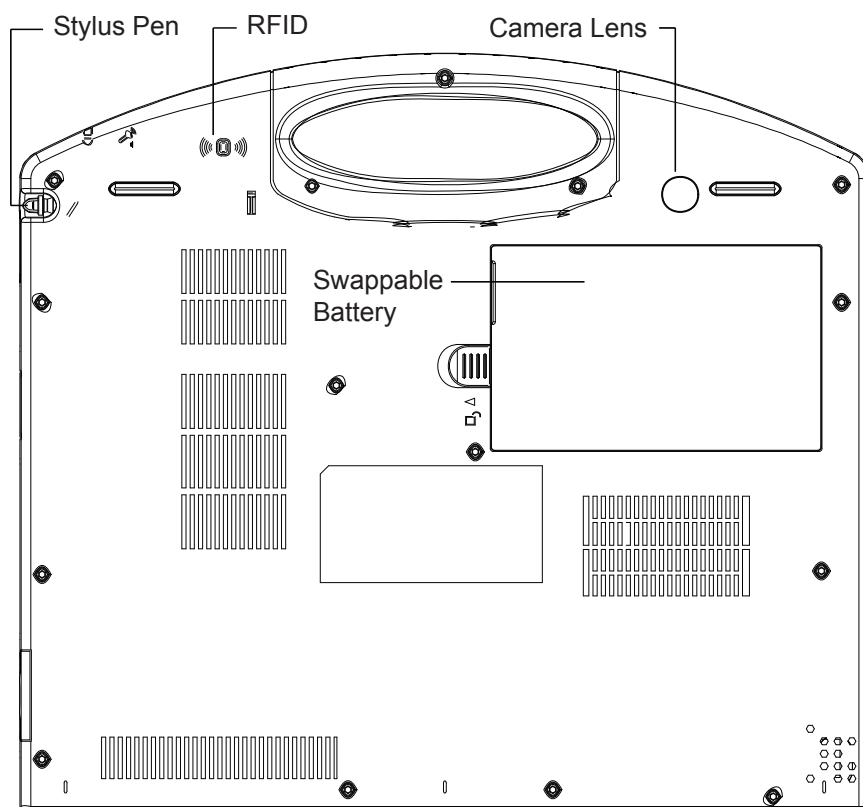
LED	Color	Status	Description
Power	Green	On	When power is on, the green LED underneath the power button glows
		Blinking	Hibernation mode
		Off	No power
WLAN/RFID	Green	On	WLAN connection is active
		Off	WLAN connection is inactive
	Amber	On	RFID reader enabled
		Off	RFID reader disabled
Bluetooth	Blue	On	Bluetooth connection is active
Battery Charging	Red	Blinking	Battery charge level is below 20%
	Amber	Blinking	Battery charge level is between 20% and 70%
	Green	Blinking	Battery charge level is between 70% and 95%
		On	Battery charge level exceeds 95%
Battery Discharging	Red	On	Battery charge level is below 10%
		Blinking	Battery charge level is below 20%
	Amber	On	Battery charge level is between 20% and 70%
	Green	On	Battery charge level exceeds 70%

Note:

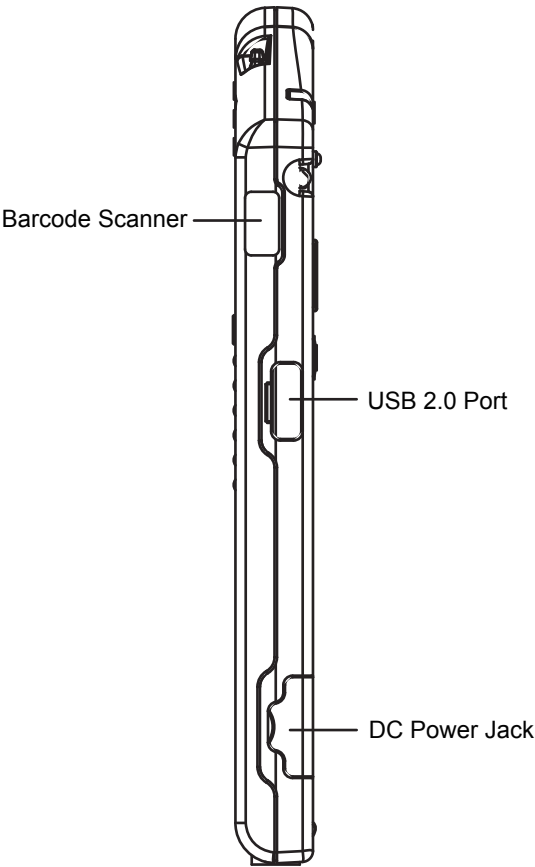
The LED indicator  is shared between WLAN and RFID. When the WLAN and RFID functions are both enabled, the LED light is mixed with amber and green colors.

Rear side

The rear side contains a stylus pen, the RFID reader, the 2.0M pixels CCD, and a swappable battery.



Right side



1.7 Bar Code Types

As follows, M1255 Medical PC supports 1D/2D bar codes.

PDF417



PDF417(Chinese)



QR



QR(Chinese)



DataMatrix



DataMatrix(Chinese)



Aztec



MicroPDF





Chapter 2

Using the Medical PC

2.1 Getting Started

This chapter will help you have your medical PC up and running smoothly, and give you the information about how to utilize the various functions.

The medical PC supports Windows XP Professional and Windows Vista. Before installing operating system and driver utilities, you should prepare your own USB keyboard, USB CD ROM drive, and the power adapter included in the package if the battery charge level is insufficient. When the operating system on your computer is ready, please use the accompanying CD ROM to install the drivers and utilities for the respective devices. The following sections will guide you through the drivers and utilities installation step by step.

2.2 Docking & Undocking

The docking station (DKS-1255) is equipped with one RJ-45, one VGA, three USB connectors and one battery charging bay. It's useful for users to connect multiple peripheral devices at the same time.

Caution:

The docking station comes with an solenoid valve for locking the computer, and the only way of taking the computer off the docking station is passing identity recognition. Thus, before sliding the computer into the docking station, make sure you are immediately to install operating system, the fingerprint scanner driver/application, and the function key application (these are the necessary software for undocking). Otherwise, the computer is locked by the solenoid of the docking station until the necessary software are ready.

To implement the undocking mechanics, please follow the instructions below:

1. Install the operating system for the computer (a USB type CD ROM drive is needed).
2. After the operating system is installed, the next is to install the driver for fingerprint scanner. Put the CD ROM into the CD ROM drive and then please refer to section **2.3.10 Fingerprint Scanner Driver Installation** step by step.
3. When the fingerprint scanner driver is installed, the next is to install the fingerprint scanner application. Refer to section **2.3.11 Fingerprint Scanner Application Installation** for the installation procedures.
4. The next is to install the function key application. please refer to section **2.3.12 FunctionKey Interface Installation**.
5. With the fingerprint scanner driver/application and function key interface installed, you are now available to remove your computer from the docking station by logging on the system again. There are three ways to log on the system: clicking **Start > Log Off** to log off and log on, pressing the **Ctrl-Alt-Del** combination keys, or simply pressing the **SAS** function button.

Note: When logging on the system, you are prompted to swipe your finger across the fingerprint scanner. Before using this fingerprint identification function, make sure you have registered at least one fingerprint via the fingerprint registration utility. Please refer to section **2.7 SAS** for further details about fingerprint registration and identification. Otherwise, you should click **Cancel** and enter password to log on.

The computer will be unlocked for 20 seconds by default, with an open-lock icon showing on the screen, when ID verification is successfully accepted. During the unlocked interval, please press the button on the right side to release the hook which fixes the computer, and now you can take the computer away by holding its handle. See the figure below.



If the computer isn't removed from docking station in 20 seconds, the docking station will lock it again and a close-lock icon shows up on the screen. The lock interval setting can be configured by users. Please refer to section **2.13 Function Key Tray** for changing lock interval.

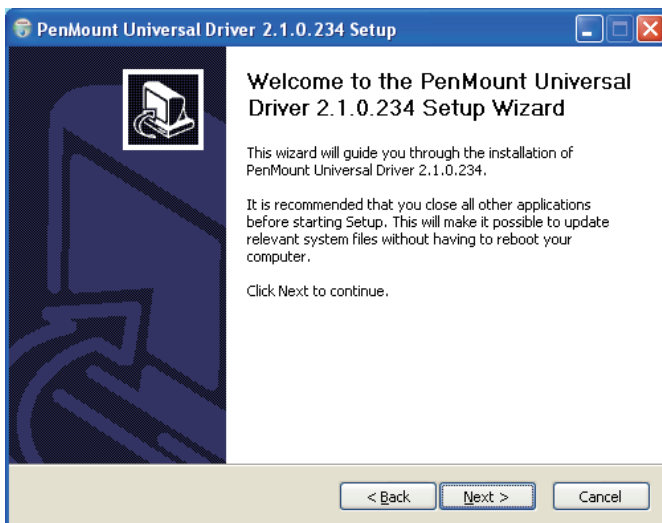
2.3 Driver Installation

2.3.1 Touch Screen Driver Installation

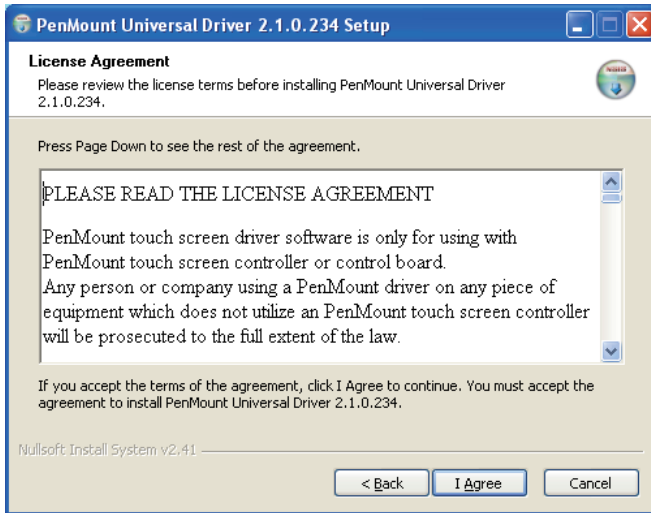
1. After you put the CD ROM into the CD-ROM drive, the driver and utility installation main menu appears. Click **Touch Panel** to install the driver for touch screen.



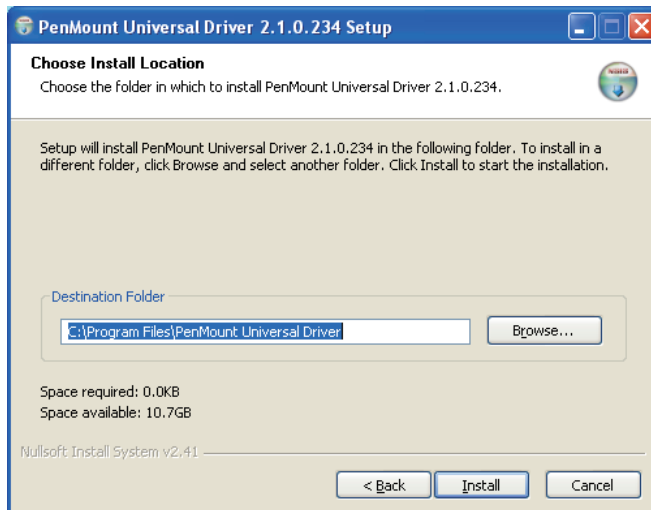
2. When you see the welcome wizard, click Next to continue.



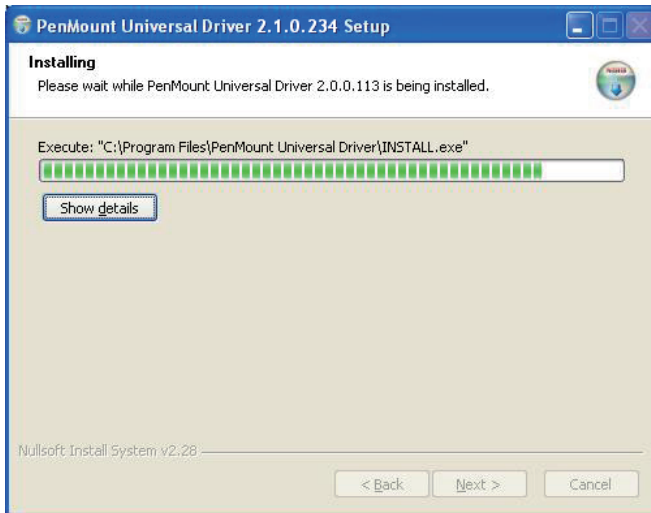
3. Please read the license agreement first, and click **I Agree** to continue.



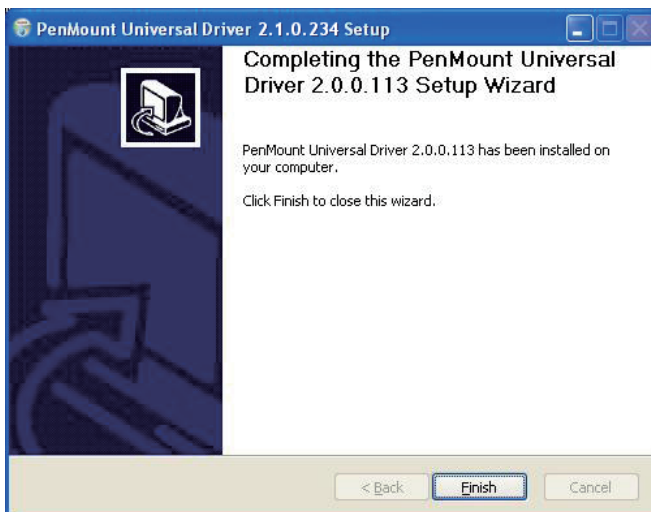
4. Click **Browse** to change the installation directory, or immediately click **Install** to continue.



5. Please wait for a while until the progress bar completes.



6. The installation is completed. Click **Finish** to close this window.



2.3.2 Chipset Driver Installation

1. Click **Chipset** of the main menu to install the chipset device driver.



2. Make sure you have closed all programs running and then click **Next** to continue.



3. Please read the license agreement first, and click **Yes** to continue.



4. Please read the Readme file for system requirements and installation information, and click **Next** to continue.



5. The chipset device driver installation is completed. Click **Finish** to close the window.



2.3.3 Graphics Driver Installation

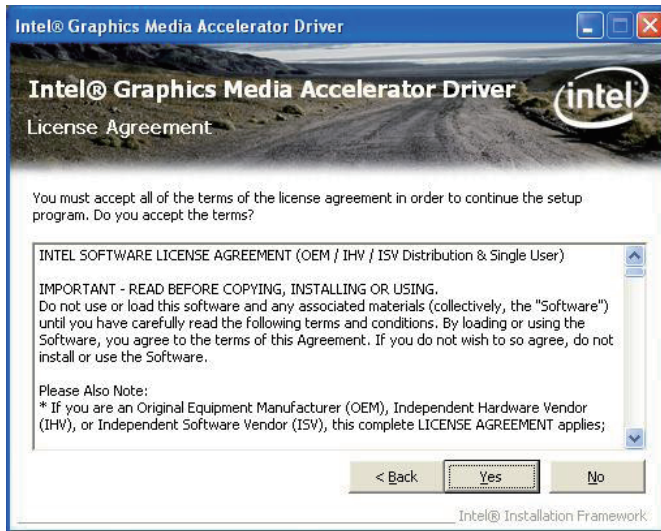
1. Click **VGA** of the main menu to install the graphics device driver.



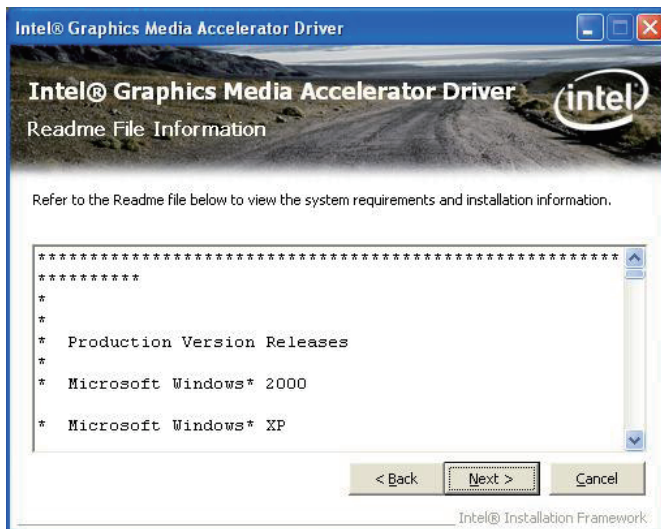
2. Make sure you have closed all programs running and then click **Next** to continue.



3. Please read the license agreement first, and click **Yes** to continue.



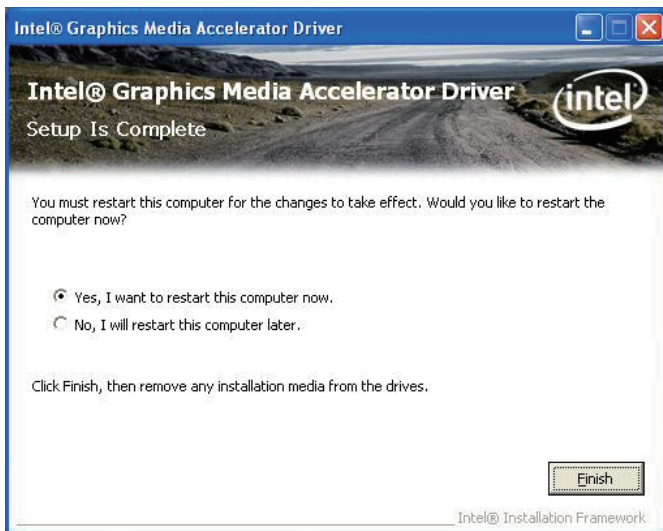
4. Please read the Readme file for system requirements and installation information, and click **Next** to continue.



5. The graphics device driver installation is completed. Click **Next** to continue.



6. After installing the graphics device driver, click **Finish** with **Yes** radio button selected to restart your computer to have the changes take effect, or with **No** to restart this computer later.

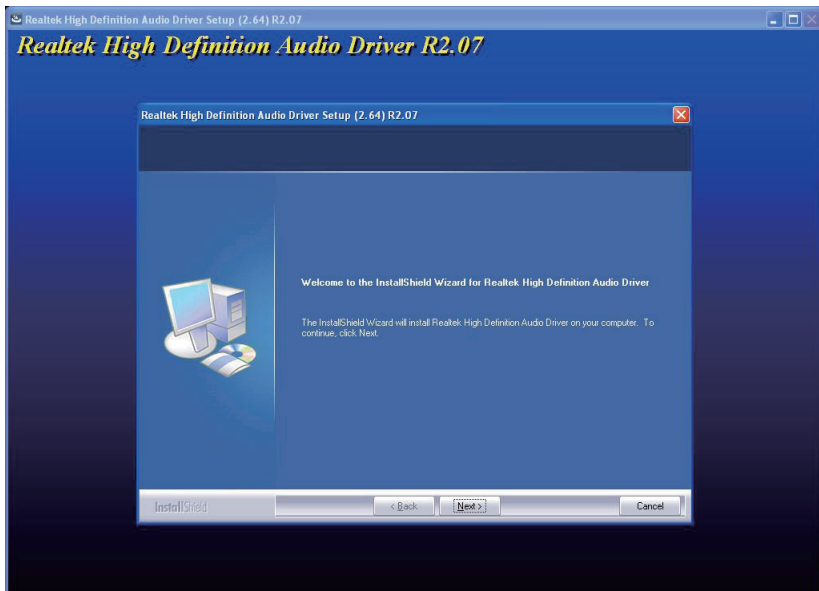


2.3.4 Audio Driver Installation

1. Click **Audio** of the main menu to install the audio device driver.



2. Click **Next** to continue.



3. After installing the audio device driver, click **Finish** with **Yes** radio button selected to restart your computer to have the changes take effect, or with **No** to restart this computer later.

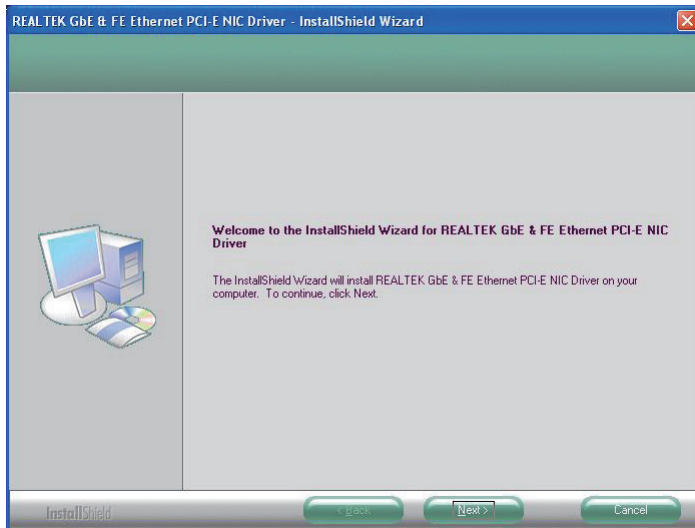


2.3.5 LAN Driver Installation

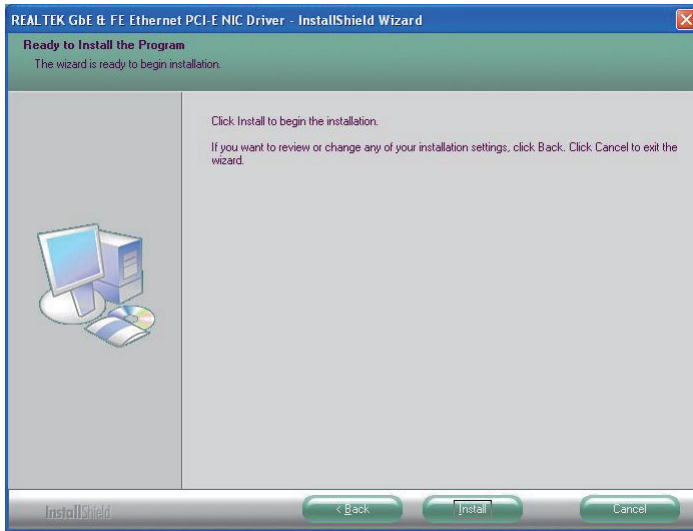
1. Click **LAN** of the main menu to install the LAN device driver.



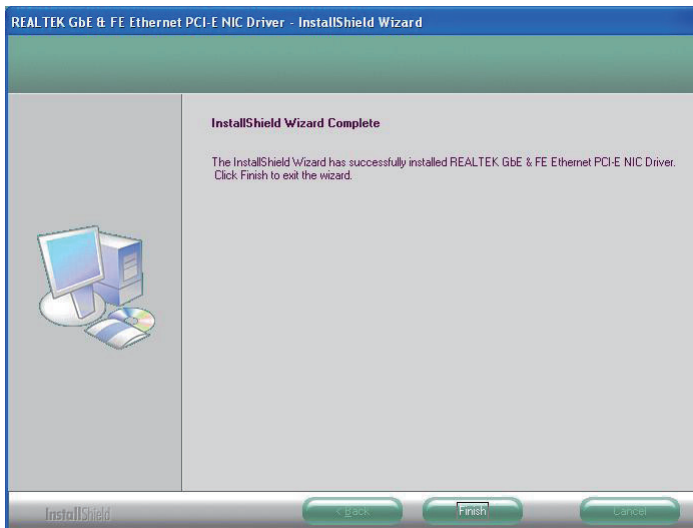
2. Click **Next** to continue.



3. Click **Install** to start installation, or **Back** to go back to the previous step.



4. Click **Finish** to close the wizard window.



2.3.6 Wireless LAN Driver Installation

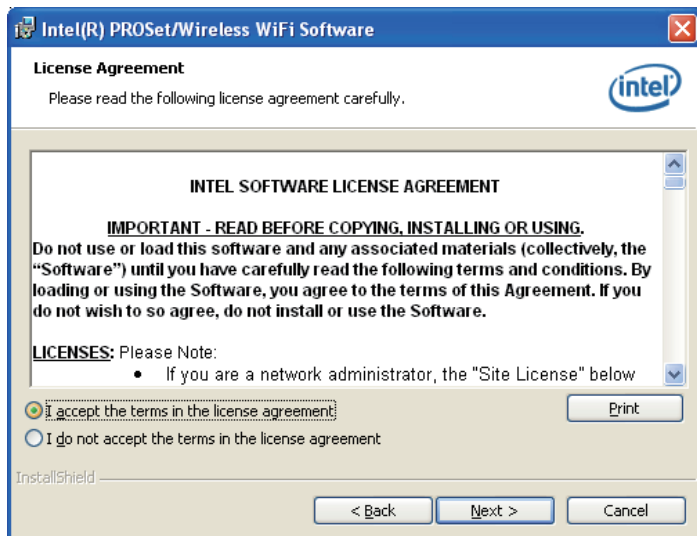
1. Click **Wireless LAN** of the main menu to install the wireless LAN device driver.



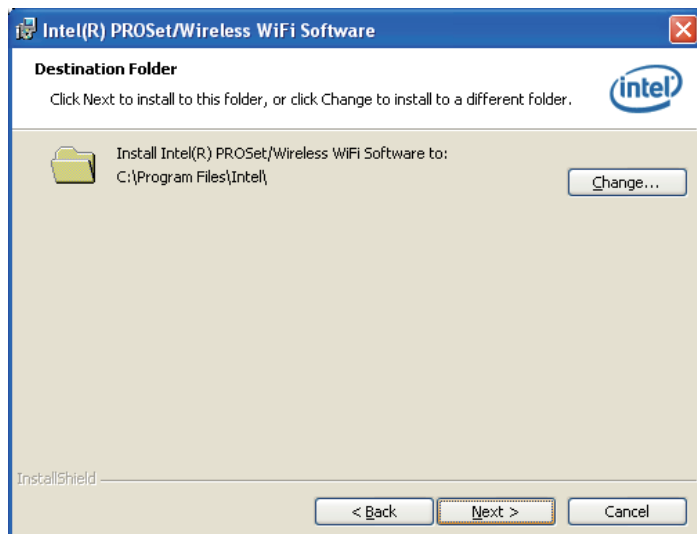
2. Check the driver information and click **Next** to continue.



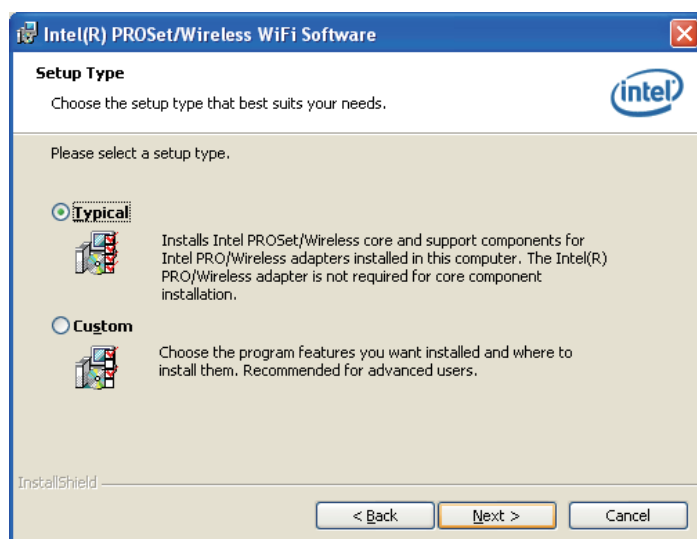
3. Please read the license agreement first; select ***I accept the terms in the license agreement*** and then click ***Next*** to continue..



4. Click ***Next*** to install to this folder, or click ***Change*** to install to a different folder.



5. After choosing the setup mode that best suits your needs, click **Next**.



6. After the installation is completed, click **Finish** to close the window.



2.3.7 Bluetooth Driver Installation

1. Click **Bluetooth** of the main menu to install the Bluetooth device driver.



2. A dialog box shows up. Click the down arrow to drop down the selection menu and choose a language item and then click **OK** to continue.



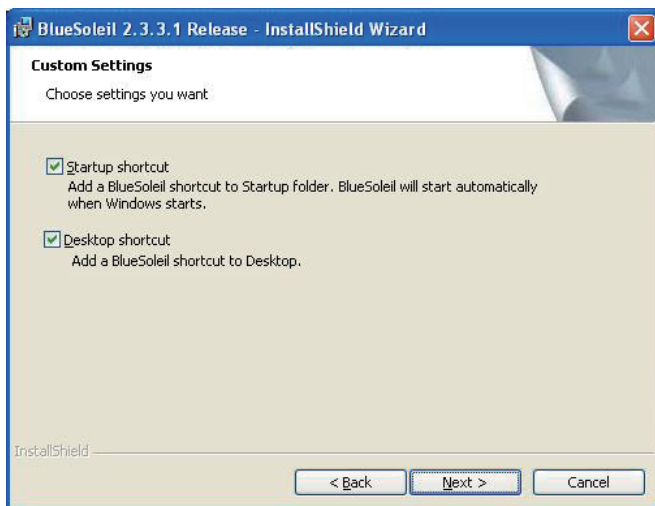
3. Check the driver information and click **Next** to continue.



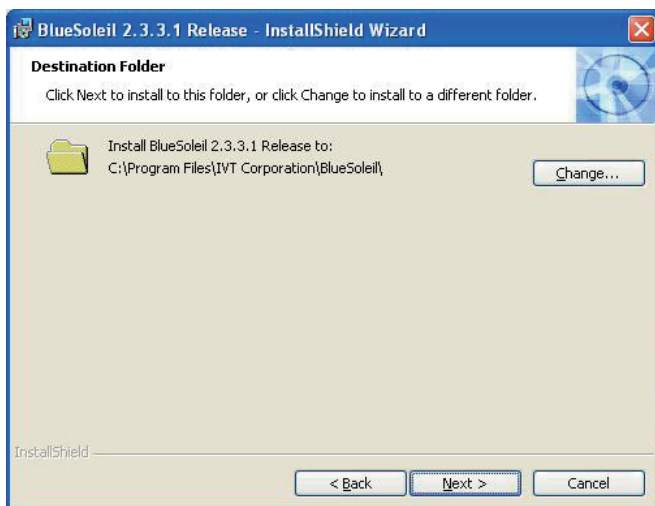
4. Please read the license agreement first; select **I accept the terms in the license agreement** and then click **Next** to continue.



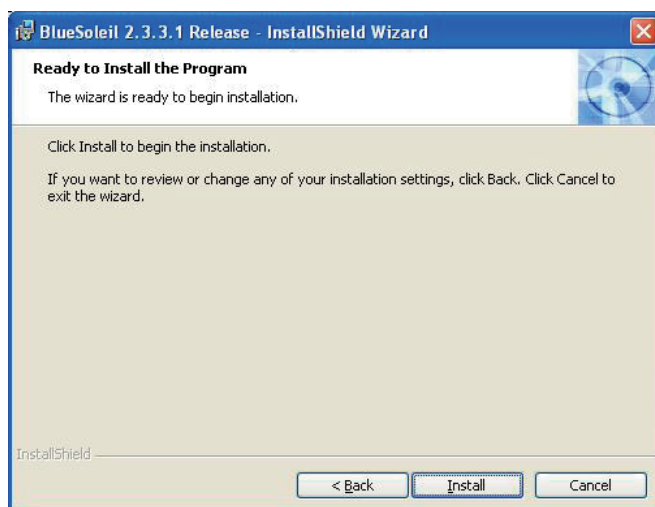
5. If you want to create shortcuts to Startup folder or Desktop, tick the check boxes beside the text label and then click **Next** to continue.



6. Click **Next** to install to this folder, or click **Change** to install to a different folder.



7. Click **Install** to start installation, or click **Back** to go back to the previous step.



8. After the installation is completed, click **Finish** to close the window.



2.3.8 RFID Driver Installation

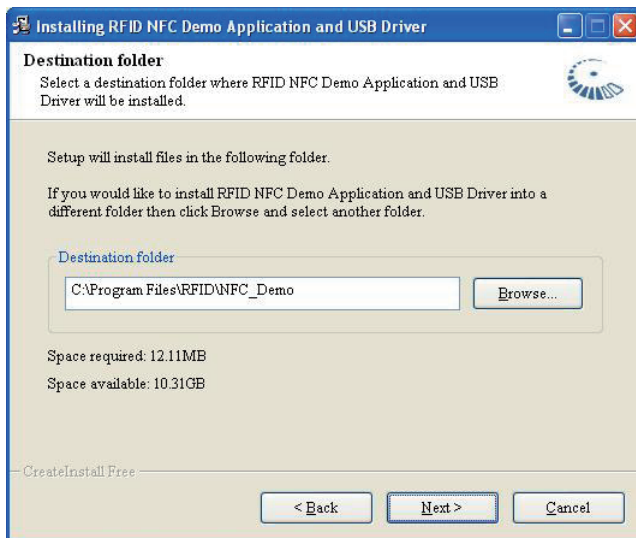
1. Click **RFID** of the main menu to install the RFID and USB devices driver.



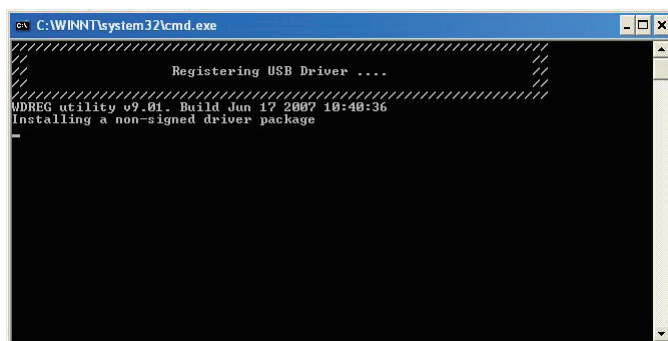
2. Read the driver information and then click **Next** to continue.



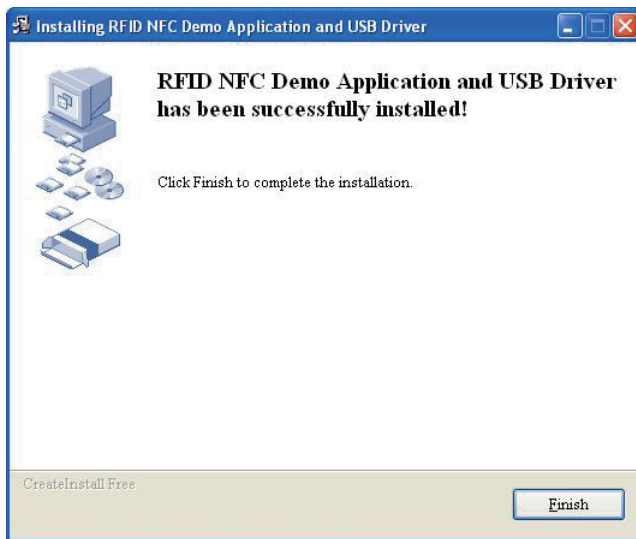
3. Click **Next** to install to this folder, or click **Browse** to install to a different folder.



4. The driver is being installed, please wait for a while.



5. Click **Finish** to complete the installation.



Note:

After installation, the RFID device information in Device Manager may appear with an exclamation mark. To solve this problem, please manually update the driver for this device, just once.

2.3.9 ComPort Driver Installation

1. Click **ComPort** of the main menu to install the com port devices driver.



2. The driver is being installed, please wait for a while and then the installation will automatically completed.



2.3.10 Fingerprint Scanner Driver Installation

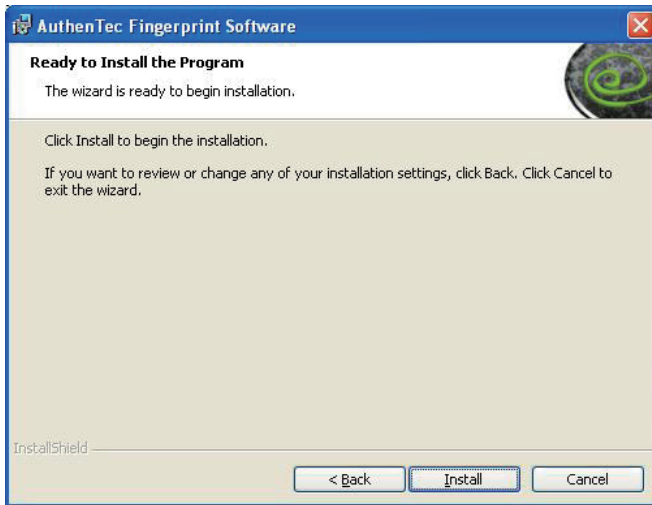
1. Click **Finger Print Drive** of the main menu to install the fingerprint scanner driver.



2. Click **Next** to continue.



3. Click **Install** to start installation.



4. The installation is completed. Click **Finish** to close the window.



2.3.11 Fingerprint Scanner Application Installation

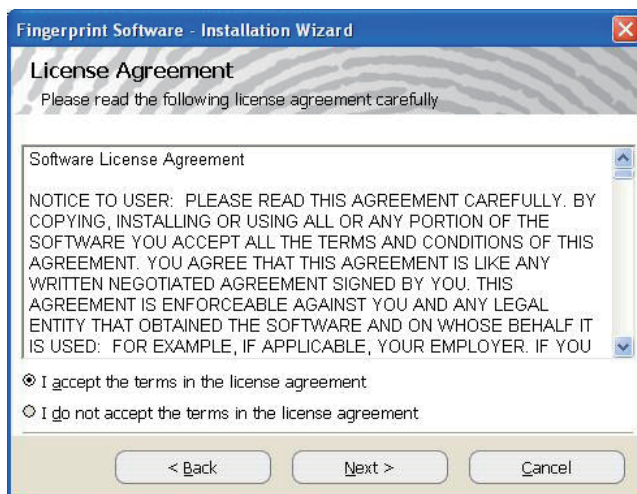
1. Click **Finger Print Ap** of the main menu to install the fingerprint scanner application.



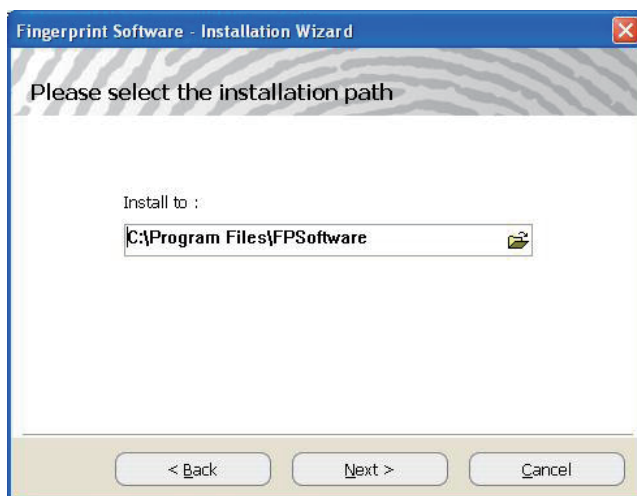
2. Click **Next** to continue.



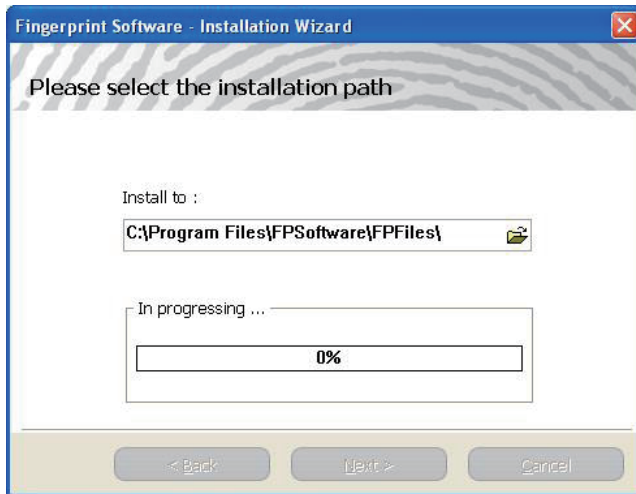
3. Please read the license agreement first; select ***I accept the terms in the license agreement*** and then click ***Next*** to continue.



4. Click ***Next*** to install to this folder, or click the folder icon to locate a different path for installation.



- The installation is in progress. Wait for a while until the progress bar reaches the end.



- Click **Finish** to complete the installation.



2.3.12 FunctionKey Interface Installation

1. Click **FunctionKey** of the main menu to install the funtionkey interface as a component into the control panel.



2. Click **Finish** to complete the installation.



Note: With this utility installed, an on-screen keyboard, which is different to the Windows on-screen keyboard, will automatically show up when users are to log on to the system. It is useful especially when no physical keyboard is available.

2.4 Audio Recording

The medical PC is equipped with a built-in microphone. Press the audio record button located on the front panel to bring up Windows Sound Recorder for voice or audio recording.



2.5 Screen Security Lock

Press once to disable the touch screen function; press again to enable. While the touch screen is disabled, you can still control your computer via keyboard/mouse.



2.6 On-screen Keyboard

Press to bring up or close the Windows on-screen keyboard.



2.7 SAS



For security reason when you are to leave or take the computer off the docking station, press once to bring up the fingerprint verification dialog box (if the fingerprint scanner application is installed and enabled). Or press twice to bring up the password logon dialog box and then type in your password to access the computer. It allows you to quickly switch between users without actually logging off the computer.

Before using the SAS function, you have to create the password for your user account in Windows XP and then register your fingerprint as a template for logon use. The steps as follows will guide you through the fingerprint registration.

1. Make sure you have created the password for your user account.
2. Select **Start > Programs > Fingerprint Software > Fingerprint Registration** to launch the fingerprint registration application and the Windows Logon Setting window appears.
3. The column field labeled **'User Name'** displays **'User1'** by default which is the current user account in Windows XP.
4. Type in the password which was created for the current user account.
5. Retype the password to confirm it.
6. Tick the check box labeled **'Use WindowsLogon'** and click **OK**. If not, the fingerprint identification will not be launched when logging.

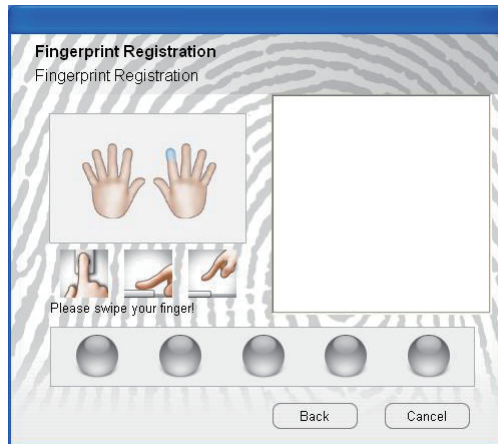
7. After the Windows Logon Setting is finished, the Fingerprint Registration window appears. Click on any of the fingers shown on screen and press next.



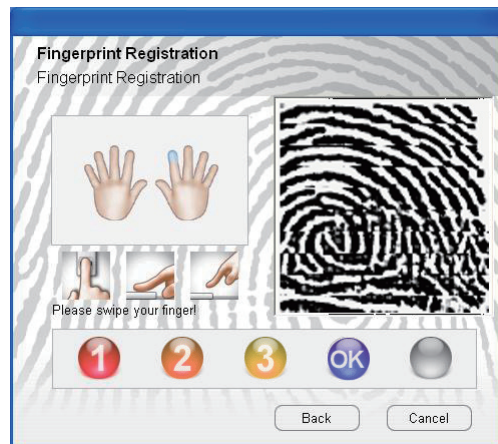
8. With the selected finger appearing in blue, the 'Next' button becomes available to be clicked. Click it to continue.



9. When this window shows up, swipe your finger across the finger identification sensor on the top right of your computer.



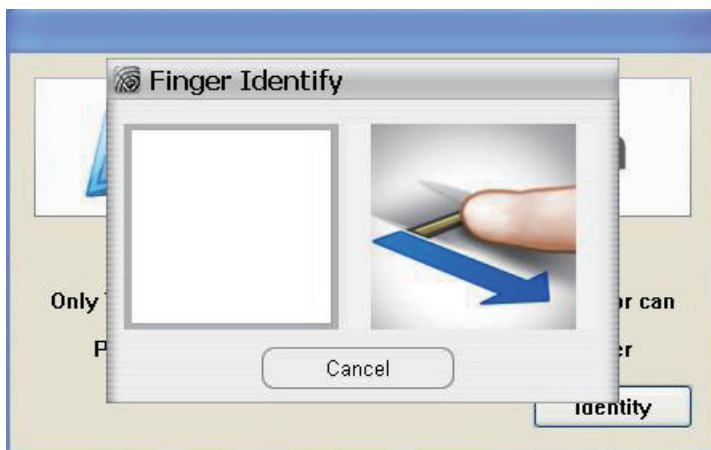
10. Please swipe your finger again until the counter below shows **OK** that means your fingerprint registration is successfully accepted.



11. The finger you have just registered appears in green. Click **Finish** to close the window. And then a dialog box appears to ask you to restart Windows; press **Yes** to restart immediately.

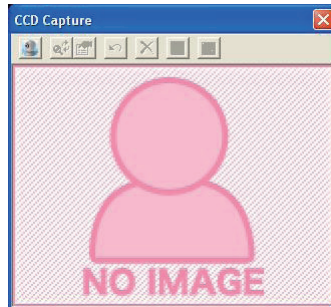


12. After the fingerprint template is registered, you can press the **SAS** button to bring up the fingerprint identification window. To access your computer, swipe your finger across the fingerprint scanner, or click **Cancel** and then enter password instead for identity varification.



2.8 Video Recording

Press video record button to launch the CCD video recorder and the window shows up.

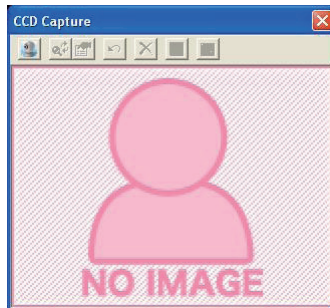


Press again to enable the CCD lens, which you will hear the two smooth sounds of music. Now you can see the real image shown in the window. Press the button; you may see a pop-up dialog box asking for video compression mode selection. Click **OK** to start video recording and you can see the hint text showing that the video is saving on the tool bar. Press the button to stop recording and you can see the hint text showing that the video is saved. You can find the recorded video files in the path of **C:\Documents and Settings\[user account]\My Documents\ccd**.



2.9 Camera

Press the camera button to launch the CCD camera and the window shows up.



Having enabled the CCD lens by pressing the button again, you will hear the two smooth sounds of music. Now you can see the real image shown in the window. Press the button, you can hear a shutter sound, to take a picture and you can see the hint text showing that the image is saved in BMP file format. Please find the saved files in the path of **C:\Documents and Settings\[user account]\My Documents\ccd**.



2.10 Bluetooth

Press to enable/disable Bluetooth connectivity. It's convenient when the computer leaves the docking station. You can connect the devices like mouse, keyboard, mobilephones or computers to this medical PC via the Bluetooth wireless connection.



2.11 Bar Code Scanner

The medical PC supports 1D/2D bar codes for retrieving information of the objects. Hold the computer by the handle and place the bar code of the object towards the bar code scanner in proper distance. Press the bar code scan trigger to receive the information.



Bar code button



2.12 RFID Reader

Press the RFID button to enable RFID reader and the RFID LED indicator turns on in amber. Get the RFID object near the RFID sensor at the rear of the medical PC to receive information.

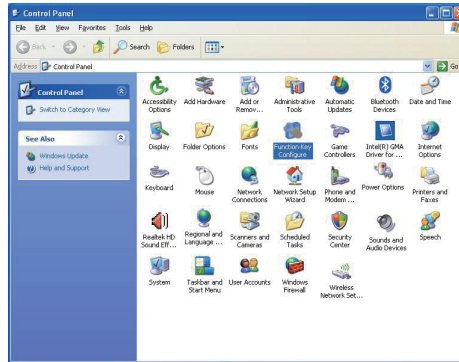


RFID button



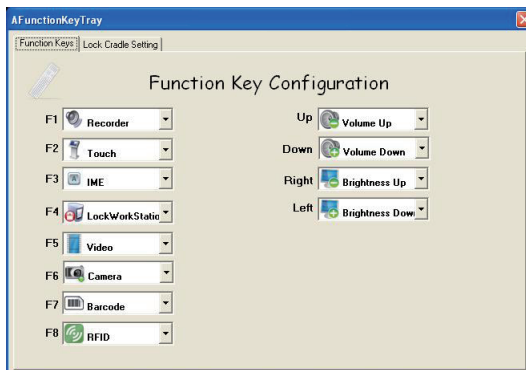
2.13 Function Key Tray

With the FunctionKey utility installed, see the figure below, a new item named **FunctionKey Tray Configuration** is created in **Control Panel**. This applet gives the definition list of function buttons and interval time setting of docking station lock functions.



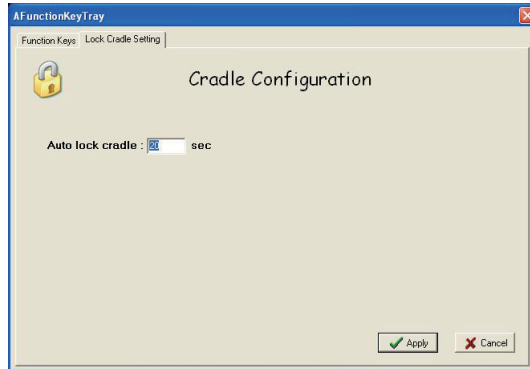
2.13.1 Function Key Configuration

Having clicked the icon, the **Function Keys** tab shows up displaying the function key configuration.



2.13.2 Lock Interval

Click the **Lock Cradle Setting** tab, type in the respected lock interval time in seconds and click Apply to have the setting take effect.



This page is intentionally left blank.

Chapter 3

BIOS

3.1 BIOS Main Setup

The AMI BIOS provides a Setup utility program for specifying the system configurations and settings. The BIOS ROM of the system stores the Setup utility. When you turn on the computer, the AMI BIOS is immediately activated. Use the left/right arrow keys to highlight a particular configuration screen from the top menu bar or use the down arrow key to access and configure the information below.

NOTE: In order to increase system stability and performance, our engineering staff are constantly improving the BIOS menu. The BIOS setup screens and descriptions illustrated in this manual are for your reference only, may not completely match what you see on your screen.

BIOS SETUP UTILITY	
Main	Advanced Boot Security Exit
System Overview <hr/> BIOS Version :1.09.00.M1255 EC Version :1.09 Build Date :05/06/09 Processor Speed :255MHz System Memory Size :504MB System Time [00:00:38] System Date [Tue 01/01/2002]	Use [ENTER], [TAB] or [SHIFT-TAB] to select a field. Use [+] or [-] to configure system Time. ← Select Screen ↑↓ Select Item +- Change Field Tab Select Field F1 General Help F10 Save and Exit ESC Exit
v02.61 (C)Copyright 1985-2006, American Megatrends, Inc.	

System Time

Set the system time.

The time format is:

Hour : 00 to 23

Minute : 00 to 59

Second : 00 to 59

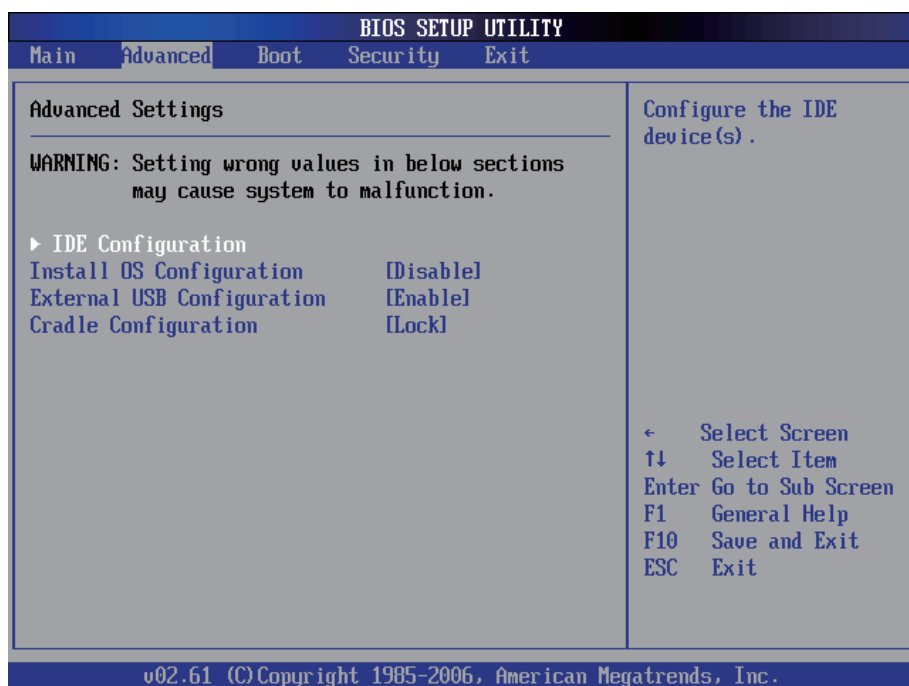
System Date

Set the system date. Note that the 'Day' automatically changes when you set the date.

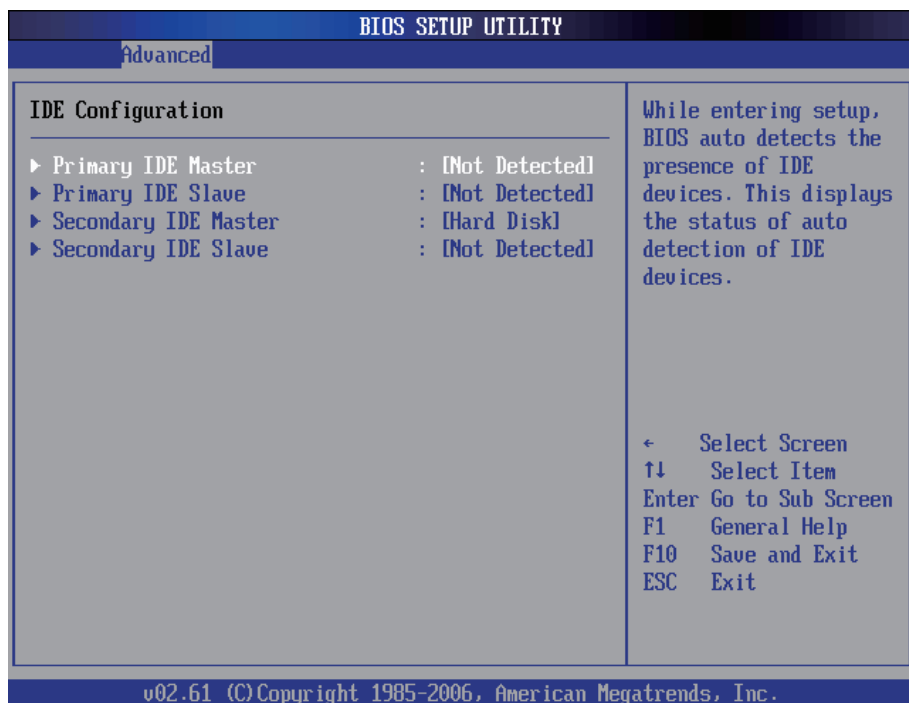
The date format is:

- Day** : Sun to Sat
- Month** : 1 to 12
- Date** : 1 to 31
- Year** : 1999 to 2099

3.2 Advanced Settings



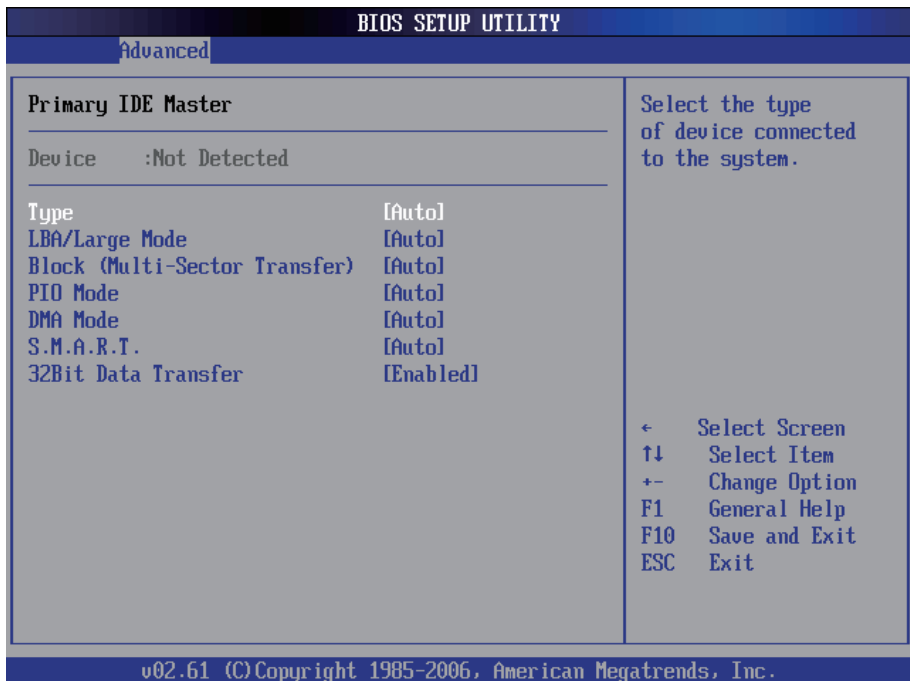
3.2.1 IDE Configuration



Primary/Secondary IDE Master/Slave

Select one of the hard disk drives to configure it. Press <Enter> to access its the sub menu.

IDE Configuration Sub Menu



Type

This setting determines the type of the IDE device. The default value is **Auto**.

LBA/Large Mode

This setting enables or disables support for IDE drives with capacities greater than 528MB. The default value is **Auto**.

Block (Multi-Sector Transfer)

This setting enables or disables to support IDE drives using Block Mode. The default value is **Auto**.

PIO Mode

This setting determines the IDE Programmed I/O mode. The default value is **Auto**.

DMA Mode

This setting determines the IDE DMA mode. The default value is **Auto**.

S.M.A.R.T

This setting determines the IDE Self-Monitoring, Analysis and Reporting Technology mode. The default value is **Auto**.

32Bit Data Transfer

This setting determines support for IDE drives that permit 32-bit accesses. The default value is **Enabled**.

3.2.2 Install OS Configuration

With this function disabled, you are not able to install operating system. Enable it for installing operating system and remember to disable this function again after installation completed.

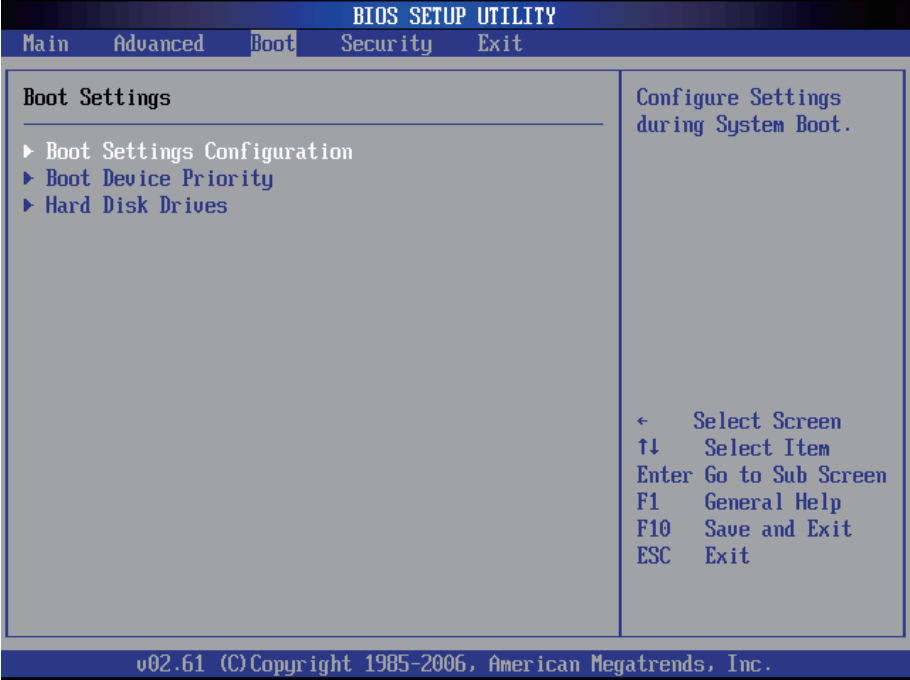
3.2.3 External USB Configuration

Disabling this function will have the USB port on the right side unavailable to protect the computer from unauthorized data access. It's enabled by default. Note when you decide to disable the external USB port, you'd better to enable the supervisor password as well via BIOS setup utility. See section **3.3 Security** for further details.

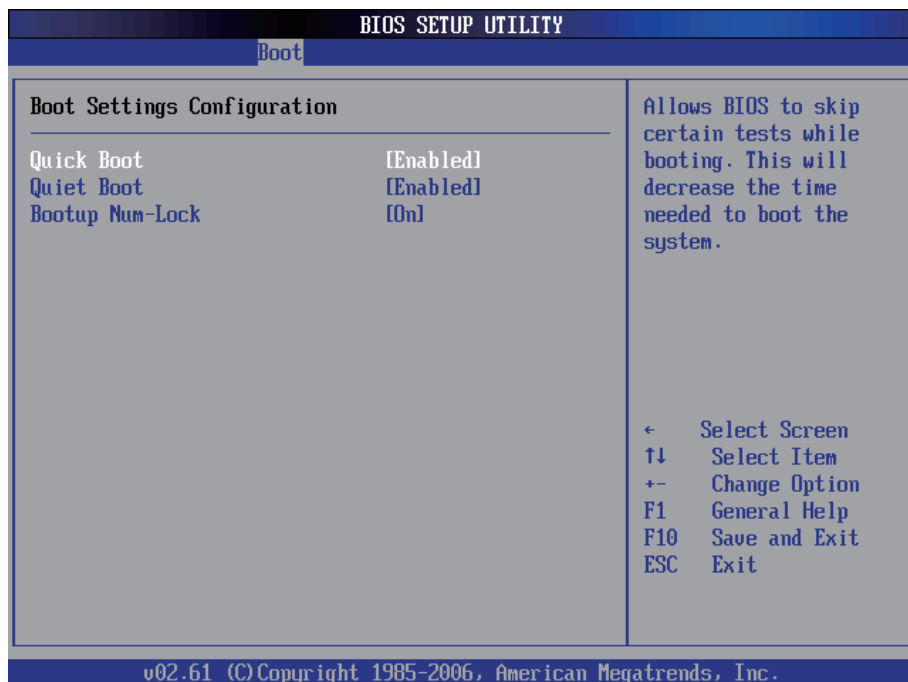
3.2.4 Cradle Configuration

Set this function to Lock or Unlock. When set to Lock, users cannot take the computer off the cradle until they have passed identity varification. When set to Unlock, users can easily take the computer off the cradle without any identity varification if the system power turns on.

3.3 Boot Settings



3.3.1 Boot Settings Configuration



Quick Boot

During the power on self test, the BIOS checks the hardware devices and counts the system memory. But all of these system tests are needed every time you boot, and can be turned off to save time. Enable this setting to turn those tests which are not needed.

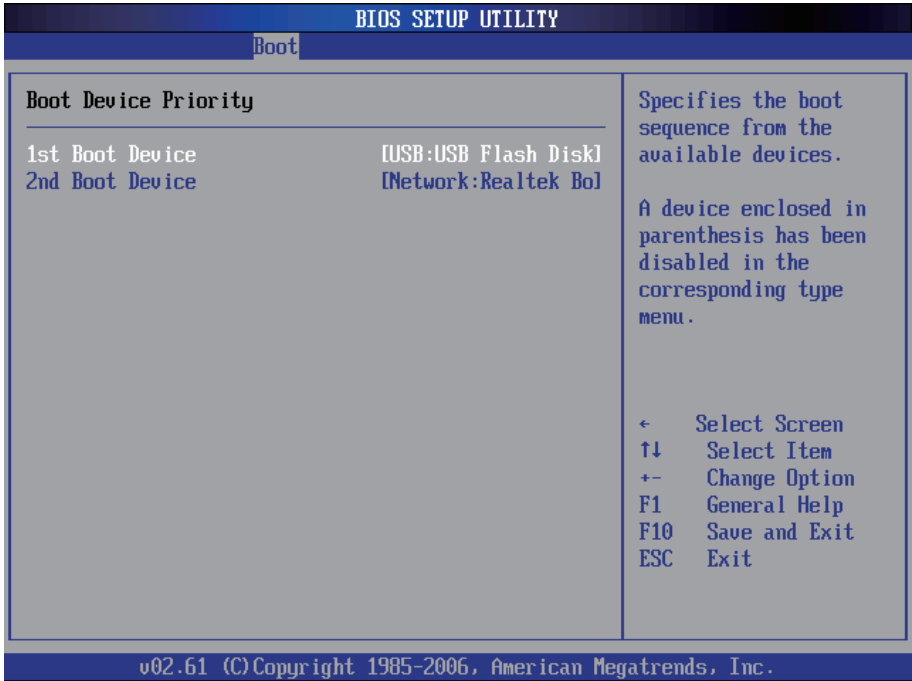
Quiet Boot

This setting determines if the BIOS should hide the normal POST messages with the motherboard or system manufacture's full-screen logo. When it is enabled, the BIOS will display the full-screen logo during the boot-up sequence, hiding normal POST messages. When it is disabled, the BIOS will display the normal POST messages instead of the full-screen logo.

Bootup Num-Lock

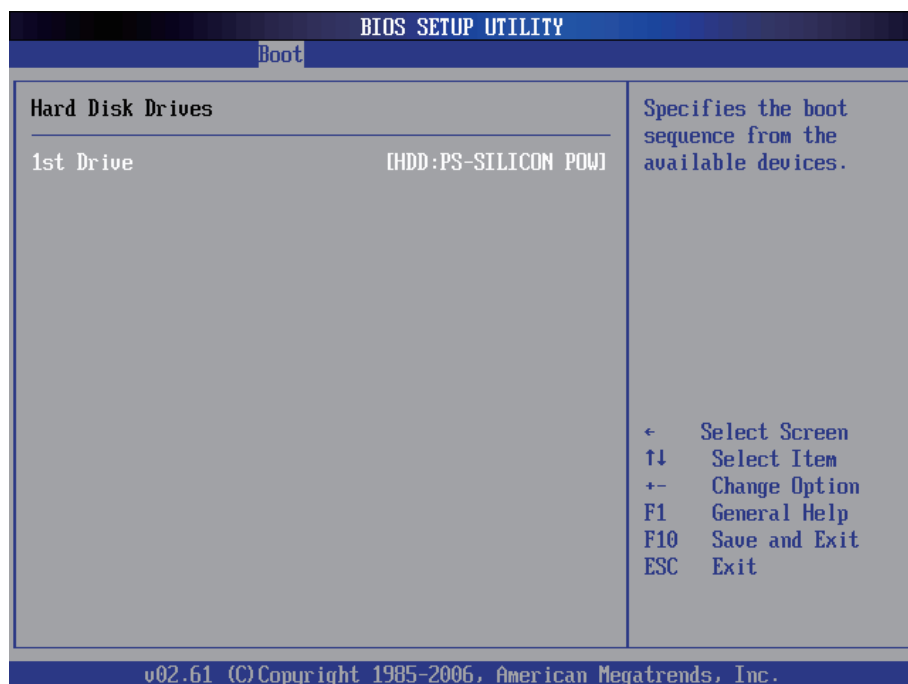
This setting determines whether the Num Lock key should be activated at boot up.

3.3.2 Boot Device Priority



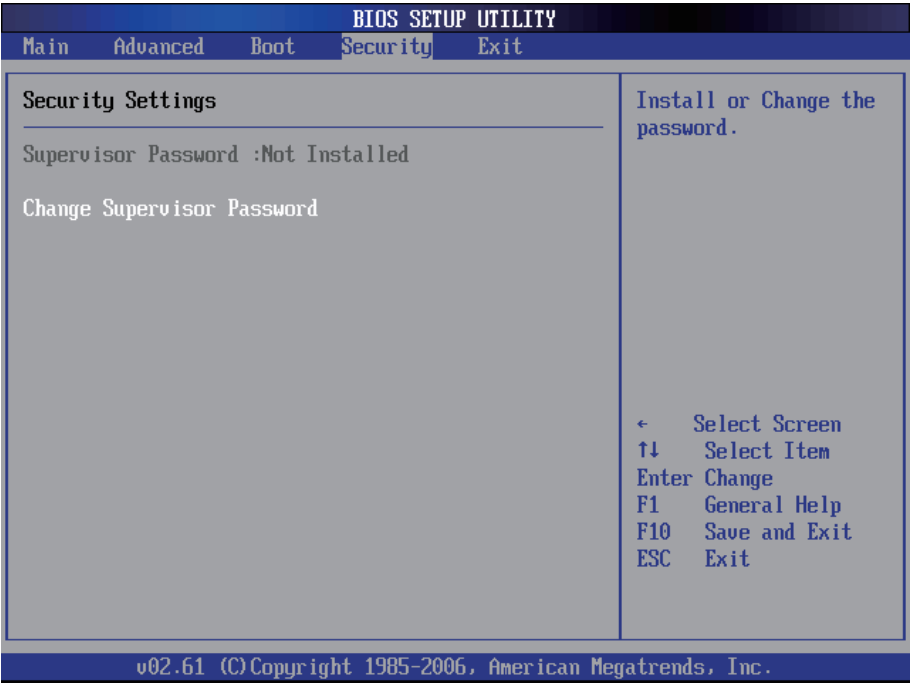
This setting determines the order that the BIOS uses to look for a boot device from which to load the operating system during the DOS boot process.

3.3.3 Hard Disk Drives



This function displays the information of HDD detected.

3.4 Security



Supervisor Password

Set **Change Supervisor Password** to enter and change the options of the setup menus. When you select this function, the following message will appear at the center of the screen to assist you in creating a password.

Enter New Password:

Type the password, up to six characters in length, and press <Enter>. The password typed now will clear any previously entered password from CMOS memory. You will be asked to confirm the password. Type the password again and press <Enter>. You may also press <ESC> to abort the selection and not enter a password.

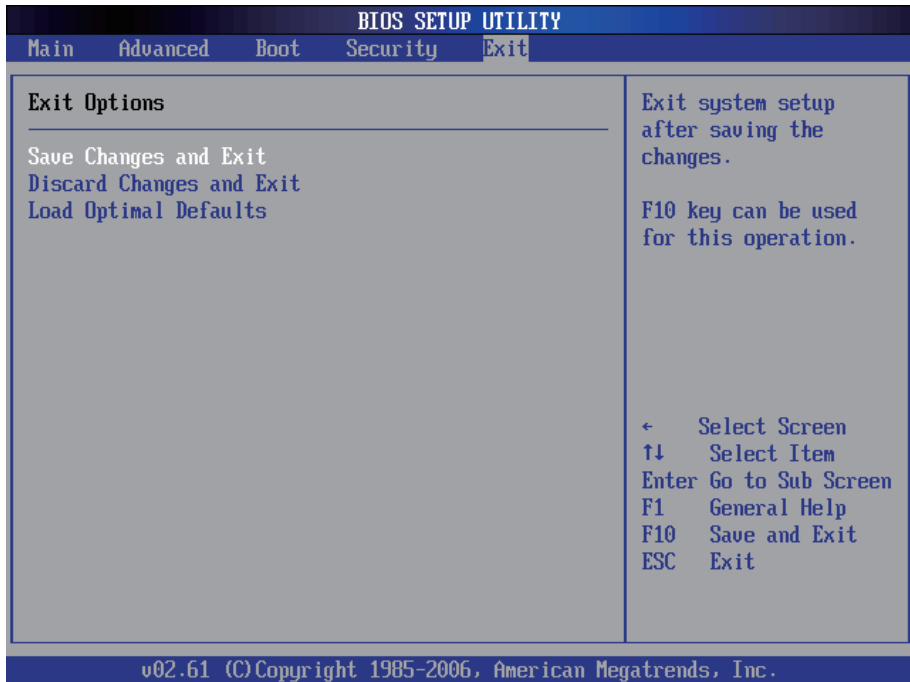
With a password created, a Password Check item appears. Set this item to **Setup**, you will be prompted to enter the password every time you try to enter the BIOS Setup utility. This prevents an unauthorized person from changing any part of your system configuration.

You can also have the BIOS to request a password every time your system is rebooted by setting it to **Always**. This would prevent unauthorized use of your computer.

To clear the password, just leave the field blank and press <Enter> when you are prompted to enter a new password. Once the password is cleared, the following message will appear at the center of the screen.

Password Uninstalled.

3.5 Exit Options



Save Changes and Exit

Pressing <Enter> on this item and it asks for confirmation:

Save configuration changes and exit setup?

Pressing <OK> stores the selection made in the menus in CMOS - a special section of memory that stays on after you turn your system off. The next time you boot your computer, the BIOS configures your system according to the Setup selections stored in CMOS. After saving the values the system is restarted again.

Discard Changes and Exit

Exit system setup without saving any changes.

<ESC> key can be used for this operation.

Load Optimal Defaults

When you press <Enter> on this item, you get a confirmation dialog box with a message:

Load Optimal Defaults?
[OK] [Cancel]

Pressing [OK] loads the BIOS Optimal Default values for all the setup configurations.

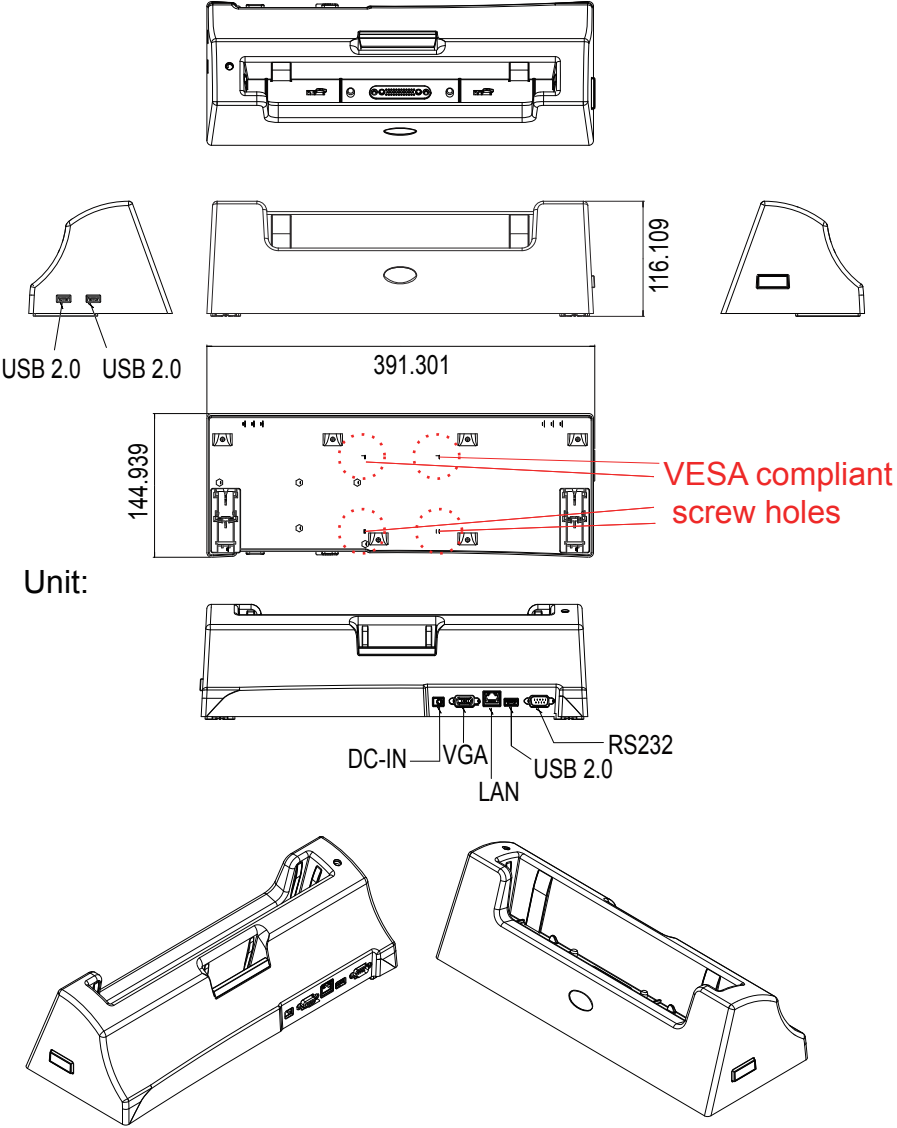
<F9> key can be used for this operation.



Appendix

A.1 Docking Station

By using the docking station, users can connect external peripheral devices, such as a monitor, a serial device, USB devices etc.



A.1.1 Connecting an External CRT

There is a 15-pin analog RGB interface connector located at the back of the docking station for connecting a secondary display. The system can support simultaneous display on both its LCD display and on the external CRT display.

Note:

1. When you connect an external CRT or VGA-based monitor to the VGA port of the docking station and if the external monitor appearance is abnormal, please modify the display properties to set the external monitor as the primary monitor. After the external monitor appearance becomes normal, you can set the medical PC back to primary and then the problem disappears.
2. The preferred resolution is 1024 x 768 because this is what the LCD Panel needs to operate full screen.

A.1.2 External Serial Port (COM)

The docking station supports a serial port of D-SUB 9-pin male connector which supports RS-232.

To connect the serial device, follow the steps below:

1. Turn off the Portable Medical PC system and the serial device.
2. Attach the interface cable of the serial device to the 9-pin D-SUB serial connector. Be sure to fasten the retaining screws.
3. Turn on the computer and the attached serial device.
4. Refer to the serial device's manual for instructions to configure the operation environment to recognize the new attached devices.
5. If the serial device needs specified IRQ or address, you may need to run the CMOS setup to change the hardware device setup.

A.1.3 LAN Port

M1255 provides one Realtek 8111C-VC-GR 10/100/1000Base-T Ethernet (RJ-45) interface. For network connection, follow the instructions below:

1. Turn off the Medical PC system and the Ethernet hubs.
2. Plug in one end of cable from a 10/100/1000Base-T hub to the system's RJ-45 jack.
3. Turn on the Medical PC system and the Ethernet hubs.

A.1.4 USB Ports

M1255 provides four external USB ports to connect to external USB devices. USB ports and devices are hot plug capable. Therefore any USB device can be connected at all time without the need to power down your system. Note that for many of these devices you will first have to install proper device drivers before they can be recognized by the system.

A.1.5 DC Power Input

One end of the power cable is fitted with a standard power connector that connects to any normal wall outlet (types differ per country). To connect the system to power, follow the instructions below:

1. Make the system power switched off.
2. Plug the circular connector firmly into the circular socket of the docking station or the medical PC.
3. For operation, power up the system.

A.1.6 LED Indicator on Docking Station

The LED indicator of the docking station only displays the status of the external battery installed in the charging slot.

Color	Status	Description
Green (charge level above 70%)	On	The external battery has full charged or stops charging temporarily because the batteries installed in the computer are charging with a higher priority.
	Blinking	External battery is charging.
Amber (charge level between 20 and 70%)	On	The external battery stops charging temporarily because the batteries installed in the computer are charging.
	Blinking	External battery is charging.
Red (charge level below 20%)	On	The external battery stops charging temporarily because the batteries installed in the computer are charging.
	Blinking	External battery is charging.
OFF		No power