



VKP80II SX

80mm ticket / receipt printer

- High print quality (200 DPI)
- Paper width: from 60 to 82.5 mm (adjustable paper-infeed for different paper widths)
- Printing > 220 mm/sec
- Automatic ticket Presenter (speed: > 1000 mm/s)
- RS232+USB
- 1D and 2D barcode printing: (QR CODE, PDF417)
- International fonts on-board: any language available
- 4MB internal flash memory for logos and fonts
- Highly reliable cutter: over 1,500,000 cuts
- Sensors: paper end, black mark, ticket presence, printing unit opening and near paper end on the roll holder



CHARACTERISTICS

- Anti Jamming System
- Automatic Status Back
- Adjustable paper infeed for different paper widths
- Self-balancing paper roll holder
- Illuminated paper bezel
- Multi-position paper roll
- The standard roll holder handles paper rolls with a diameter of up to 180mm
- Automatic ticket Presenter
- Automatic ticket retracting
- Operating temperatures -20 ÷ +70°C

APPLICATIONS:

- Self-service kiosks
- Banking machines and cash dispensers
- Gaming machines
- Parking meters
- Vending machines
- Queue management systems

SOFTWARE:

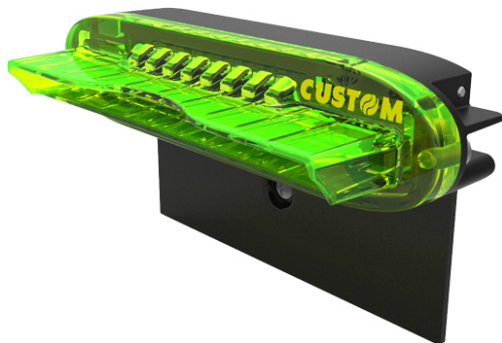


SOFTWARE PrinterSet : to update logos, edit characters, set operating parameters and update the printer firmware. It allows you to create a file including the different SW customizations and send them to the printer via the interface provided, for easy and fast setting.

- Full remote management via internal web server
- Automatic e-mail sending for service purposes
- DLL status monitor
- Auto-installing drivers for Win XP/Vista /7/8/10 (32/64 bit compatible)
- Linux Driver (C.U.P.S.) 32/64 bit compatible
- WOSA XFS driver
- JavaPOS Driver
- OPOS Driver
- CustomPowerTool

Standard interface (OPOS compatible) that enables the user application to access the functionalities of the POS printer.

ACCESSORIES



Shutter for outdoor use:

- Allows you to reduce on-site technical service costs, since it strongly increases the life of internal components
- It prevents any accidental introduction of objects into the printer bezel
- No software update required
- Easy to install, even on site (retrofit)

Operating conditions:

- Minimum paper weight: 60gr/mq with 85% humidity (non-condensate)
- Operating temperatures: -20 ÷ +70°C

What is in the box:

- Device, power supply cable, short guide
-

TECHNICAL SHEET

Printing Method	Thermal with fixed head
Number of dots	8 dots/mm
Resolution	203 DPI / head featuring improved printing quality
Printing (mm/sec)	220 mm/sec
Character set	PC437, PC850, PC860, PC863, PC865, PC858
Printing Format	Normal, height and width from 1x to 8x, reverse, underlined, script, bold
Printing Direction	Straight, 90°, 180°, 270°
Paper width	from 60 to 82.5 mm
Paper weight	from 55 to 110 g/m ²
Roll Dimension	max 180mm (150mm with paper roll on top)
Emulation	CUSTOM/POS
Interfaces	RS232+USB
Data Buffer	16 KB
Flash Memory	384 KB
Graphic Memory	2 logos of 608 x 862 dots (for 80/82.5mm paper width)
Drivers	Full Driver for win XP, Vista, 7, 8, 10 (32/64 bit compatible); Linux Driver, 32/64 bit compatible; OPOS; JavaPOS, WOSA XFS
Software Tools	CustomPowerTool, PrinterSet
Power supply	24 Vdc±10%
Medium consumption	1A (12,5% dots turned on)
MTBF	590,000 hours (electronic board)
Head Life	100Km / 100M pulses
MCBF	1,500.000 cuts
Operating temperature	-20 ÷ +70°C
Dimensions	149.5 (L) x 121.2 (H) x 123.5 (W) mm
Weight	1.6 Kg

MODELS



915DW011000300

PRINTER VKP80II SX USB RS232



CUSTOM S.P.A. - Via Berettine, 2 - 43010 Fontevivo PR - VAT: IT02498250345 - TEL: +39 0521 680111 - FAX: +39 0521 610701 - UNIQUE CODE: TI80WI0

The technical data on this website are not binding and may be changed without advanced notice.

Last update: 18 March 2021

